

**THE BENTLEY
BUGLE**



COMMUNITY & CHURCH NEWS



ISSUE 108 - DECEMBER 2025 JANUARY 2026



A COMPANY THAT CARES

Mob: 07885 350722

100 The Street, Capel St Mary

Ipswich IP9 2EQ

saprior68@icloud.com

CAPEL STATION GARAGE

MOT's - Class 1, 2, 3, 4 & 7

Servicing & Repairs

Tel: 01473 730002 or 730033

Fax: 01473 730269

**Old Station Yard, Bentley Hall Road
Capel St Mary, Ipswich, IP9 2JL**

Mobile Foot Care Practitioner



FOOT CARE PRACTITIONER

07900541421

carrieg@btconnect.com

Foot Health Check & Advice

Nail Trimming

Callus (Hard skin)

Cracked Heels

Corns

Verrucas

Fungal & Thickening Nails

Ingrown Toenail

Athletes Foot

NELSON POTTER

QUALITY FENCING & GARDEN BUILDINGS

Fence Panels, Trellis, Willow Panels,
Post & Rails, Poles, Stakes, Wire
Netting, Sheds & Summerhouses

Local Deliveries £5

TEL: 01473 311905

Dodnash, Bergholt Road, Bentley IP9 2DQ

www.nelsonpotter.co.uk

Suffolk's First Co-operative Pub



Case is Altered

OPENING HOURS

Monday Closed

Tuesday Closed

Wednesday 6pm - 10pm

Thursday 6pm - 10pm

Friday 6pm - 10:30pm

Saturday 6pm - 10pm

Sunday 12pm - 3pm

For more information go to:

www.thecasepubbentley.co.uk

THE BENTLEY BUGLE - COMMUNITY AND CHURCH NEWS COORDINATORS

Editors - Marianne Munday (Production) & Christine Campbell (Copy)

Email: mariannebugle@gmail.com Copy to: christine.bugle@gmail.com

Treasurer - Marianne Munday

39 Silver Leys, Bentley, IP9 2BS

Tel: 07808 259331

Advertising - Christine Campbell - Email: christine.bugle@gmail.com

Little Orchard, Capel Road, Bentley, IP9 2DW

Distribution - Jane Day - Email: ellispark5363@yahoo.com

Greenacres, Capel Road, Bentley, IP9 2BL

Tel: 01473 310518

Church Correspondents - Sandra Mehen & Alison Partridge

Email: sandramehen@gmail.com

bentleychurchevents@gmail.com

19 The Link, Bentley

Tel: 01473 310383

GROVE FARM SOLAR FARM

A public inquiry is to be held into the appeal by Green Switch Capital Ltd against Babergh District Council's decision to refuse the application.

(APP/D3505/W/25/3370515)

It will be held at the Orwell Room, Wherstead Park, The Street, Wherstead, IP9 2BJ and will start on 20th January 2026 at 10.00 am.

For those wishing to attend, the venue is fully accessible to people with disabilities.

Front cover

Winter Oaks - Mike Whiteman

If you have any suitable photos for future issues, please forward to Christine at christine.bugle@gmail.com

COPY FOR THE FEBRUARY 2026 - MARCH 2026 ISSUE SHOULD REACH CHRISTINE BY NOON ON WEDS 21ST JANUARY 2026. Copy can be submitted either on paper or electronically (preferred). Please try to ensure that any copy submitted electronically is in a standard format e.g. .doc, .docx, txt, .jpg, .png, or .pdf and the preferred font is Arial 14pt.

Bentley Directory

PARISH, DISTRICT AND COUNTY COUNCILS

Parish Council - Chair	Michael Bamford	07707 905889
Parish Council - Clerk	Joy Scott	01206 298174
Babergh District Councillor	Marc Rowland	
County Councillor	Georgia Hall	07955 434445

BENTLEY ORGANISATIONS AND CLUBS

Bentley Primary School		
(Headteacher)	Jo Austin	01473 310253
(Chair Governors)	Simon Hurst simon.hurst@copdock.suffolk.sch.uk	
(Chair PTA)	Sarah Hawley	07894 294319
Bentley Community Pub	Kate Spicer	01473 314187
Bentley Comrades	Ray Savage	01473 311122
Bentley Community Stores	Bob Feltwell	01473 310182
Bowls Club	Simon Faiers	07836 559480
Carpet Bowls	Jill Mills	01473 311103
Case Book Group	Sandie Utton	01473 328241
Footpath Society	John Wheals	01473 310569
Footpath Warden	Tim Hamstead	07748 821594
Friends of St Mary's	Bob Feltwell	01473 310735
Horticultural Society	Mark Usher	01473 310322
Recorders	Moira Usher	01473 310322
Scrabble Club	Robin Owen	01473 311844
Tree Warden	Colin Hawes	01473 310678
Tuesday Club	Veronica Howe	01473 310344
	Catherine Sweeney	01473 310095
Village Hall - Bookings	Veronica Howe	01473 310344
	Mark Usher	01473 310322
Village History Recorder	Nicky Moxey	01473 313125
Whist Club	Veronica Howe	01473 310344
Womens Institute	Sandra Ford	01473 310072

ST MARY'S CHURCH, BENTLEY

Rector	Rev'd Chris Willis	
Benefice Administrator	Michelle Jowers	07955 329341
Benefice email address	michelle@constablebenefice.org	
Churchwardens	Tom Hill	01473 311119
	Jane Day	07767 697351
Assistant Priest	Revd Don Mehen	01473 310383

BENTLEY BAPTIST CHURCH ADMIN

07814 465222

Bentley Parish Council website - <http://bentleysuffolkparishcouncil.gov.uk/>

Bentley (in Suffolk) Community Facebook page - <https://www.facebook.com/groups/292599697915731/>

Other village websites are listed in the publication.

Parish Diary

DECEMBER 25

- 2nd -Tuesday Club - Christmas Lunch -The George, Hintlesham.
- 3rd - Comrades - Village Hall, Blackmore Room at 7.30 pm
- 3rd - Whist Drive - Village Hall from 7.30 - 9 pm
- 4th - Parish Council Meeting - Village Hall from 7.30pm
- 6th - Food Vendor - Dolly's Pizzas - Case is Altered from 5-8 pm
- 6th - Music at the Case - Case is Altered from 8.30 pm
- 10th - Case Community Lunch - Case is Altered from 12 pm
- 10th - Bentley Bluebells WI - Village Hall 7.30pm
- 11th - Scrabble Club - Village Hall, Blackmore Room at 2.30pm
- 11th - Open Mic Night - Case is Altered from 8.00 pm
- 12th - Carols and Mulled Wine - Village Hall at 7 pm
- 14th - Christingle Service - St Marys Church at 10 am
- 16th - Tuesday Club - Village Hall at 2.30pm
- 19th - Horticultural Society - Village Hall from 7.30 pm
- 21st - Carols and Lessons - St Marys Church at 10 am
- 21st - Carols at the Case - Case is Altered from 4.00 pm
- 27th - Monthly Quiz - Case is Altered at 8pm

JANUARY 26

- 1st - Footpath Society - New Year's Day Walk - from Case at 11 am
- 7th - Comrades - Village Hall, Blackmore Room at 7.30 pm
- 8th & 22nd- Scrabble Club - Village Hall, Blackmore Room at 2.30pm
- 8th - Parish Council Meeting - Village Hall from 7.30pm
- 13th & 27th- Tuesday Club - Village Hall at 2.30pm
- 14th - Case Community Lunch - Case is Altered from 12 pm
- 14th - Bentley Bluebells WI - Village Hall 7.30pm
- 15th - Open Mic Night - Case is Altered - from 8.00 pm
- 17th - Music at the Case - Case is Altered from 8.30 pm
- 16th - Horticultural Society - Village Hall - from 7.30 pm
- 25th - Monthly Quiz Night - Case is Altered at 8pm

Other Activities in the Village

- NEW! Bentley Baby and Toddler Group - Every Mon 9.30-11.30 am
- Holistic Yoga - Every Mon 7.30 - 10.00pm - Village Hall
- Aerobics Class - Tuesday 9.45am (Term Time only) - Village Hall (contact Jill Sharp for information - 01473 311546
- Carpet Bowls - Every Tuesday 7.30pm & Weds 2.30pm - Village Hall
- Coffee at the Case - every Friday between 10.30 and 12.00 noon.

BENTLEY VILLAGE AT CHURCH NEWS

CHRISTMAS AND NEW YEAR SERVICES

SERVICES IN DECEMBER 2025

Sunday 7th	10.30 am	Connect at Bentley with Rev Chris Willis
Sunday 14th	10 am	Christingle Service
Sunday 21st	10 am	Carol Service & Lessons
Wednesday 24th	3 pm	Crib Service (Note time change)
Thursday 25th	10am	Christmas Day Worship with Communion

SERVICES IN JANUARY 2026

Sunday 4th	10.30am	Connect at Tattingstone with Rev Chris Willis
Sunday 11th	10am	Morning Worship with Communion
Sunday 18th	10am	Morning Worship
Sunday 25th	10am	Morning Worship with Communion

Mulled Wine, Coffee and Carols - Friday 12th December at 7pm
Bentley Village Hall only £4. Accompanied children free.

Sing familiar Carols and hear some light-hearted Christmas Readings. You will be welcomed with a glass of mulled wine or fruit juice and there will be coffee and mince pies in the interval.



Christingle Service



10am Sunday 14th December

Come and make your own Christingle Orange

Meet St Nicholas and bring him gifts for homeless families. The collection during the service will be for The Children's Society.

Please let Jane know by Thursday 11th December if you are coming.

Carol Service and Lessons

10am Sunday 21st December

Come and hear the familiar readings and sing carols as we prepare to celebrate Christmas and the birth of Jesus our Saviour



Crib Service – for children of all ages!

Wednesday 24th December at 3pm

Come and help us tell the Christmas Story

Dress up as your favourite person in the story an angel or a shepherd. Mary or Joseph, a king or even the grumpy Inn keeper!!



CHRISTMAS DAY WORSHIP WITH COMMUNION

At Bentley Church on Christmas Morning at 10am. Please Join us for this very special service as we celebrate and give thanks for the birth of our Saviour

SUNDAY SERVICES

If you would like to help at one of our services by reading the Bible or leading prayers please let us know. New voices are always welcome.
Please speak to Jane Day or Ken Felgate. Thank you.

EAST VILLA

Continued thanks for the donations of towels and bedding that we take regularly to East Villa for those made homeless. They are always very gratefully received. You can leave donations on the doorstep at 19 The Link or bring to church on a Sunday. Thank you, your generosity is much appreciated.

We are also hoping to take small, unwrapped Christmas gifts for both adults and children this year so they do not feel forgotten as others celebrate Christmas. Please may we have all gifts by Sunday 14th December so we have time to deliver them.

THANK YOU

To all who attended the Remembrance Service at the War Memorial and the All Souls Bereavement Service, about 40 people from the local community gathered together for a short poignant service to remember loved ones now departed. The gathering took place outside in the churchyard around the lit remembrance tree, followed by refreshments and the sharing of happy memories around the fire pit.

NEED A LISTENING EAR?

Do you know of anyone in the village who would like a visit at home or in hospital? Would you like someone to visit you? Would you like someone to talk to, pray with you or for you? Please call Doreen or 311122 Carolyn on 311090 or Jane 310518. Many thanks.

Church Contact Details for Weddings, baptisms, funerals or other enquiries

Church Warden – Tom Hill – 01473 311119

Church Warden – Jane Day – 01473 310518

Rector Constable Country Benefice – Rev Chris Willis –

revchris@constablebenefice.org

Administrator Michelle Jowers – michelle@constablebenefice.org

Assistant Priest – Rev Don Mehen – 01473 310383

Treasurer – Ken Felgate – k.felgate108@btinternet.com

PCC Correspondent – Sandra Mehen – 01473 310383

PCC Secretary – Jane Day – 01473 310518

Events & Tickets – Alison Partridge – bentleychurchevents@gmail.com

The Time Machine

When I was a child, the wait for Christmas seemed to last almost forever. Time seemed so much slower in those days. The days and weeks crept by. Now I am an adult, every week seems like just a couple of days, every month, just a couple of weeks. Does time speed up as we get older? Obviously, the answer is no, but it does certainly seem to feel that way.

I remember also the joy of opening the advent calendar each day, the temptation to open a second window, but then that it will be two days before I can open the next. And hoping for a huge chocolate in the big number 24 window! Now I am older, I find myself willing the days to slow down and the hours to pause, so I can get everything done which I need to.

That's getting to the root of the matter. In our busy, busy world, it seems that time feels slower when we have more space in the day and week. It seems terribly fast when our days, as often they are, become packed with deadlines and demands.

Looking back again to my childhood, I absolutely loved the film, with its sumptuous technicolour, called 'The Time Machine'. The machine when programmed to move through time would stay still, but the surroundings would change dramatically. I think that if I could choose one superpower – time travel would be it. Perhaps then I could buy some more time!

But alas, no such superpower for me. Yet perhaps that wish reveals something more profound, a wish to still be able to savour the moment. To step out of the rush of life, to find again that childhood wonder of expectation and awe.

Each Advent and Christmas, I think many of us seek to reconnect with that childhood sense of wonder. The newness to a child's mind of Christmas tree lights, the sound of carol singers, the smell of a spiced wine (only for the adults of course!).

Advent can be a time which can rush by filled with busyness. It is easy, now I am older, to be too busy in the moment, so busy that wonder, joy and a sense of expectation can pass me by.

I think I was inspired to write this article having been preparing for Advent service, and reminded of the journey we are each invited to participate in. Each Sunday through advent with a new focus, first Hope, then Peace, then Joy and Love, and finally, on Christmas day, the Christ Child.

I hope, like me, you will take a moment to pause, moments even (unless you have a time machine of course!) to once again, with childlike eyes, be expectant and savour the days, press the occasion pause button on the rush, and this Advent, seek that very hope, peace, joy and love that can only come from the Child, who is God with us.

Rev. Chris, Rector, St. Mary's

BENTLEY CARPET BOWLS

Members have been practicing as usual on Tuesday evenings and Wednesday afternoons ready for the Winter League season. We have the same squad of players as before plus one addition. The first match saw us travel to Burstall and in a very close match we lost 4-6.

Our next match was against Whatfield at home a team we have not played for quite a while. All the team played brilliantly and secured a 10.0 win and by quite a large margin of shots.

Playing at Clapgate Lane is always difficult so we were reasonably pleased to come away only losing 4-6. Our team is always comfortable playing at home and this was evident again when winning 10-0 over our near neighbours Stutton.

A very enjoyable afternoon was had recently when we held our pairs competition. After lunch 12 pairs played 3 games each and after some highly competitive matches Frank and Barry were victorious in the final on the last end against Jill and Veronica.

Thanks to all members who helped to make this a successful afternoon.

The next two matches are against Hintlesham in the Joe Rice Cup. **David Howe**

BENTLEY BOWLS CLUB

Our Annual Dinner was held at Brantham Bull on the evening of Friday 7th November and attended by 19 members, partners and guests. Presentations of cups and trophies were made to Barry Ford, who won both the two woods and four woods singles, and to Bill Slegg and Simon Faiers who were runners up in these competitions. Kevin Benton and Colin Rose were presented with the cup and trophies for winning the pairs competition.

We also marked the retirement of Lillian Calvert. Husband Frank Calvert will also be retiring from competition bowling. David Howe thanked Lilian and Frank and all joined in applauding their tireless work on behalf of the Club. Lilian was presented with a bouquet of flowers to mark her retirement. This concluded a very enjoyable evening for all those attending.

The 2026 season will begin towards the end of April. We were pleased to welcome new members this year and if you are thinking about taking up lawn bowls, or rekindling an interest, you are warmly welcome to email to:

bentleysuffolkbowlsclub@gmail.com **Simon Faiers**

BENTLEY (SUFFOLK) HORTICULTURAL SOCIETY

As I sit to write the entry for the Bugle it is a dull dreary day typical of November. The trees are very quickly losing their leaves Always there is the hope that the wind will blow them miles away but alas that is a rare event!! The summer was lovely we must be thankful for that.

On Friday 19 December 2025 Bryan Thurlow will entertain with his show 'We will meet again'. Brian has been to us a number of times with his one man performances – always enjoyable. Come and join us for what I predict will be a good evening.

On Friday 16 January 2026 Colin Hawes will talk on ANCIENT WOODLAND of which we are blessed with in Bentley –which I expect to be enlightening as to what we have on our 'doorstep'. Meetings as usual are in the Village Hall and commence at 7.30pm.

Finally our Chairman and Committee wish all our members and readers a Happy Christmas and a Happy and Healthy New Year. **Pam Lovell**

NOTES FROM THE CASE



Suffolk's first Co-operative Pub!

Tel: 01473 805575

<http://www.thecasepubbentley.co.uk/>

<https://www.facebook.com/TheCaseBentley/>

email: chair@thecasepubbentley.co.uk



Christmas is only a few weeks away now and the days seem to be flying past. After a fairly mild autumn the temperature has definitely dropped so we at the Case are keeping warm and cosy around our lovely wood burner. We have quite a calendar of events leading up to the big day and more events going into the New Year too. So why not join us for the festivities and lots more?

Christmas Opening times

Christmas Eve – (Wednesday 24 December): 6pm – 10pm

Christmas Day – (Thursday 25 December): 12 – 2pm

Boxing Day – (Friday 26 December): 12 – 2pm and 6 – 10:30pm

New Year's Eve – (Wednesday 31 December): 8.00pm – Late

New Year's Day – (Thursday 1 January): 12 – 2pm and 6 – 10pm

All other opening times between the holiday dates are as normal

Music at the Case

On **Saturday 6 December**, to end the year, we have the music duo, **Dave and Martin**. Dave and Martin are a semi acoustic duo who perform covers ranging from folk to light jazz from the 60's, 70's and 80's. They also include some of their own songs. The music starts at 8.30pm. Then in January we have even more music with Bentley's own, **Brooke Telling**. Brooke, who has been one of our regular Open Mic Night performers, will be entertaining us with a solo evening on **Saturday 17 January**, starting around 8.30pm. As our Saturday music nights are proving to be very popular with our customers we are hoping to continue to bring you more live music through out the new year.

Carols at the Case

To make you feel that Christmas is really close we are holding our traditional annual Christmas Carol singing, on **Sunday 21 December**. Singing will start around **4pm**. Remember to be early if you wish to get a seat as this is a very popular event at the Case. Mulled wine will be available as will complimentary mince pies.

Open Mic Nights

Our Open Mic Nights continue to attract a good crowd and ever increasing selection of musicians and singers. The bar opens at 6pm and the music will start around 8pm. We look forward to seeing our regular performers and also welcoming new ones. A Bose sound system is supplied and if you would like to take part please contact **Dave on 07885 963882**. The next two dates for your diary are **Thursday 11 December** and **Thursday 15 January**.

Quiz Nights

This year our December quiz night is on **Saturday 27 December**. £2 entry per person, maximum team size 6. The winning team will receive vouchers to spend at the pub; the lowest scoring team receive a wooden spoon! All profits from the quiz will go to our charity of the year **EACH – East Anglia’s Children’s Hospices**. The January quiz will be on **Saturday 25 January**. **If you are interested in being a quiz master please contact Chris Pink on 07521 348220.**

Please could we politely remind quizzers that only food purchased from the pub should be consumed on the premises.

Our Charity of the Year

So far this year we have raised an amazing **£3,910.98** for our charity **EACH – East Anglia’s Children’s Hospices**. Of this total **£1000** was raised through our **Posh Afternoon Tea** event which took place in November, so a huge thank you to all who attended and to those who generously gave additional donations. Amazingly we still have another 5 months to go to further increase this fund.

Community Lunch at the Case

Our next community lunch will be held on **Wednesday 10 December at 12pm**. The menu for December will be, Beef Bourguignon. The first community lunch for 2026 will be on **Wednesday 14 January** when we will be serving Shepherd’s Pie. The bar will be open on both dates. The lunches continue to be very popular and should be booked in advance using the sign up sheet in Bentley Stores. **All are welcome.**

Street Food Vendors

On **Saturday 6 December, before the music**, one of our favourites **Dolly’s Pizzas** will be with us again. As always the food can be eaten in the pub. Dolly will be serving from **5pm - 8pm** from her van in the pub car park. Menus are available in the pub and shop, they are also available on our website and Facebook page. **The pub will be open from 5pm. Families welcome.** We hope to be restarting our food vans in February.

New Art Exhibition

We now have a new exhibition of artwork displayed on our walls for the next few months. These are the work of two local artists Pat Keenan and Sandie Utton. They are both keen amateur painters. Sandie’s pieces are all original, as are most of Pat’s exhibits although some pieces are ‘Giclée Art Prints’ taken from her original works. Most pieces are for sale, please check individual labels.

New Year’s Day Walk

This year the New Year’s Day walk will be starting from the Case is Altered. It will start at **11am and last approximately 1 to 2 hours**. The pub will be open on your return! Sensible foot wear and waterproofs recommended. **All are welcome to join the walk.**

We at the Case is Altered would like to wish everyone a very Happy and Healthy Christmas and New Year! See you soon!

POSH AFTERNOON TEA – A TRIUMPH!

We are delighted to report that the Tea, with ticket sales and donations, raised a cool **£1,000** for the pub's nominated charity, East Anglian Children's Hospice. Well done and huge thanks to all who helped to make it a success, from volunteers to customers. Several of you asked if we will do another. Yes, but not just yet!



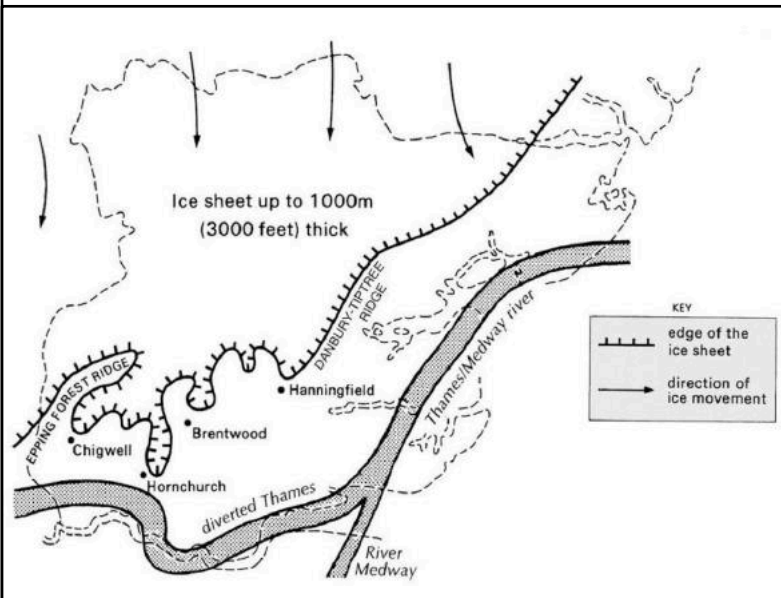
Why do we have two gravel pits on our doorstep?

Blame the Thames!

Around a million years ago, before the most recent Ice Age, the River Thames was a vast river and drained a large catchment area from as far as the West Midlands and Wales. It flowed eastward through what is roughly its current valley until, after passing through the Chiltern Hills, it began to flow northwestward through the Vale of St Albans, continuing through what is now East Essex and South Suffolk toward the sea, roughly near Lowestoft. The land levels and coastline have varied greatly since then.

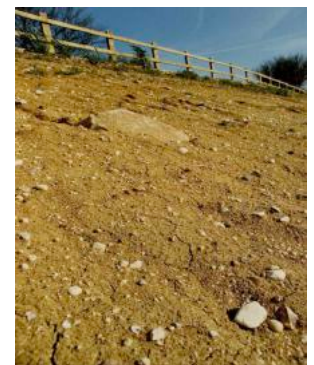
As it flowed, it brought with it substantial quantities of gravel and sand from far afield and deposited it in its bed and banks. These deposits have been named Kesgrave sands and gravels.

The gravel includes quartzite from the West Midlands, sandstone from S. Wales, and possibly the South Pennines and includes volcanic rocks from as far as Snowdonia. The considerable distance these deposits have travelled suggests that it was very fast-flowing river, at least at times. Some of the deposits may have been washed out by meltwater from previous ice sheets.



The deposition of these materials stopped when the Thames was diverted southward towards its current course by the most recent Ice Age, beginning about 100,000 years ago. Much of the Kesgrave gravel was subsequently covered by other material washed out in that ice age in northern Suffolk, but it has been left exposed, very near the surface in South Suffolk and North Essex.

The gravelly soil can easily be seen, walking the footpaths,



for instance, from Tawney's Farm back towards the village. or on the paths North toward Belstead. The unpromising agricultural value of this land has its benefit, as it has allowed the preservation of some of our ancient woodland that might otherwise have been cleared for farming. As a result, Bentley has more than its normal share of ancient woodland.

Nevertheless, the village will be challenged for the foreseeable future by traffic related to the exploitation of these mineral resources.



Michael Bamford

Kesgrave Sands and Gravels at Broomfield Gravel Quarry in 1971. Photo © British Geological Survey (P21103)

LEST WE FORGET





All Souls Service held on Sunday 2nd November in the Churchyard for those who wished to remember loved ones. Candles were lit and names of loved ones were hung on a special lit tree.

Bentley Poppy Appeal 2025

I am pleased to announce that Bentley residents donated the amount of **£1191.49** to the Royal British Legion Poppy Appeal. This total does not include any donations made by phone/credit card, the results of which will not be available until much later.

A huge thank you to the volunteer poppy collectors for giving up their time and effort, and to all who gave so generously.

Nigel Peake
Honorary Poppy Appeal Organiser



Bentley Bowls Club

Lillian Calvert has been the secretary, treasurer and a guiding light for the Club over many years.

Together with her husband Frank, they will be retiring from competition bowling.

They were thanked for all their tireless work on behalf of the Club at the recent Annual Dinner.

Lilian was presented with a bouquet of flowers to mark her retirement.



Bentley Primary School's domino cereal box challenge for Children in Need Day saw

160 boxes of cereal donated by our wonderful families.

All will be sent to the Top Up Minster in Ipswich

NEWS FROM BENTLEY & COPDOCK PRIMARY SCHOOLS



Bentley Primary 01473 310253

admin@bentley.suffolk.sch.uk

Copdock Primary 01473 730337

admin@copdock.suffolk.sch.uk

<http://www.bentleycopdock.co.uk/>



It was lovely to welcome so many prospective new families into our schools during November. We enjoyed sharing our ethos and special moments with those who visited. For more information, please see our admissions page.

Children took part in some sporting events this term and represented the federation really well. The older children also had a visit to BT for a computing event.

We were very grateful to our families for sending in items for the Amen Shoebox Appeal. These were collected and sent to families in Romania for Christmas.

Families joined us in both schools for decoration making and a tree service to start Advent. Children from both schools attended a Christmas Cake Club held at Copdock School, they spent a lovely time mixing and baking their cakes, then decorating them ready to take home at the end of the term.

Both schools also had the traditional Christmas Fairs, Christmas Craft Club and Christmas card making amongst others. The annual PTA Wreath Making Night is taking place on 11th December at Copdock, raising much needed funds for our school

As we race towards Christmas the children are preparing for their festive performances. There will be lots of rehearsals before they perform to families and friends at the end of term. We will finish the term with our traditional Christmas lunches and wearing of Christmas jumpers.



BENTLEY VILLAGE HALL

NOTICE OF ANNUAL GENERAL MEETING

7.30pm Thursday 15 January 2026

All Bentley residents (and especially representatives from users of the hall) are invited to the Village Hall's AGM. This will involve the usual reports, accounts, election of Trustees and the opportunity to raise issues and ask questions. There are currently no known non-routine issues.

The existing Trustees are all willing to stand again, but any other Bentley resident wishing to stand as a Trustee and contribute to the running of the Hall would be welcome. Please feel free to ring Mark Usher (Secretary - 310322) or refer to the Charity Commission's website for further details of the role and obligations of a Charity Trustee before nomination.

Other than "AOB", any proposal for formal consideration at the AGM, including any nomination to stand as a Charity Trustee, must be delivered to Samburu, Bentley IP9 2DW (next to hall) no later than 7 January 2026. **Mark Usher**

BENTLEY PARISH COUNCIL

SPEEDWATCH IN BENTLEY

Vacancy SPEEDWATCH CO-ORDINATOR

Bentley Parish Council are looking for a new Speedwatch Co-ordinator. Speedwatch has been in operation for a number of years and has helped slow down traffic through the village considerably. Training and help will be given by the previous Co-ordinator to the successful applicant.

Volunteers are also needed to join the Speedwatch Team – could you spare an hour of your time to join this dedicated team to help improve road safety in our village?

If you are interested please contact the Clerk.

Joy Scott – Clerk
Whites Cottage, Heath Road, East Bergholt CO7 6RJ
E-mail: clerk@bentleysuffolkparishcouncil.gov.uk
Telephone: 01206 298174

BENTLEY PARISH COUNCIL

Bentley Parish Council Meeting took place at Bentley Village Hall at 7.30pm on Thursday 6 November 2025, preceded by a Playing Field Society Meeting at 7pm

Seven Councillors, Tree Warden and 4 members of the public attended the meeting. Two Candidates applied for the vacancy of Parish Councillor. Councillors were impressed by both applicants who had skills that would be welcomed on the Parish Council but there was only one vacancy – it was a difficult decision - Alan Horne was elected and welcomed onto the Parish Council.

Apologies were received from Footpath Warden, Cllr J Campbell, County Councillor Georgia Hall, District Councillor Marc Rowland & Speedwatch.

Planning – There were three planning decisions – one new application.

Reports received from County Councillor Georgia Hall, Footpath Warden & Speedwatch.

Matters discussed:

Brockley Wood – Information re Community Liaison Group.

Solar Farm at Grove Farm - Public Inquiry re Appeal starting on 20th Jan 2026.

Revision of Conservation Area Appraisal & Management Plan post consultation.

Siting of Information Board & signage for the Conservation Area.

Charitable donation - Meeting told of £5K donation from the Ganzoni Trust.

SID Battery Management - Solar panel to be installed at Highfields.

Review of the Neighbourhood Plan – Quote for £6,500 was agreed and voted on at the October PC Meeting.

Hedge on Playing Field by 28 West Mill Green – Now been cut.

Affordable Housing – Hastoe to be contacted.

The Copse – Grass is growing. Tree Warden has got grass seed to treat any bald patches - being kept under control as a grass area at the moment.

Playing Field Society – Request for update of Children’s Play Area was discussed. Brantham Athletic Youth finished training – Portaloo removed by Capel Plant.

Playing Field Entrance – Quote accepted installation date to be agreed.

Large telegraph poles now being erected in Bentley were discussed.

Payments were authorised.

The meeting closed at 8.40 p.m. Full draft minutes are available on the PC website - <https://www.bentleysuffolkparishcouncil.gov.uk>

TUESDAY CLUB

Here we are again at the end of the year and Christmas on the Horizon, time does fly. We hope our Members have enjoyed the entertainers and speakers throughout the year. Unfortunately Kim was unable to come along and talk some more about First Aid, owing to family commitments. Griff Johns was able to step in and save the day, he talked and showed pictures of his Wing Walk which took place in Headcorn, Kent.

Gary from the Coffee Caravan brought all the up to date leaflets on numerous agencies he also brought along three large cakes for Members to enjoy. Our last Chair Aerobics for this year was fun and we thanked Mandy, hopefully she will be back next year.

In December we have our Christmas Lunch on the 2nd at The George, Hintlesham. Our final meeting on 16th will be our Christmas Party and we welcome back Brian Mann who will hopefully get us up on our feet Dancing.

It just leaves us to wish you all a Happy Christmas and New Year from Veronica, Catherine and all the Members of Bentley Tuesday Club.

Catherine Sweeney, Secretary



Season's Greetings from Constable Medical Practice



As the year draws to a close, we wanted to take a moment to wish you and your loved ones a very Merry Christmas and a happy, healthy New Year from all of us at Constable Medical Practice.

We hope you have a wonderful festive season, filled with joy and time spent with those closest to you. We understand that Christmas can be a busy and sometimes challenging time, and we're here for you if you need us.

Our team would like to express their gratitude to you, our wonderful patients, for your continued trust and support throughout the year. We're proud to be a part of your community and look forward to continuing to care for you in the year ahead.

The practice is only closed Christmas Day, Boxing Day and New Year's Day. We are open 08:00 – 18:30 throughout the Christmas and new year period Monday - Friday.

Please ensure all repeat prescriptions are submitted as early as possible in December as this also helps our community pharmacies manage demand of medication appropriately.

If you have an urgent medical need outside of our opening hours, please contact the out-of-hours service via NHS 111 for advice.

BENTLEY COMMUNITY STORES

Opening Hours

Monday to Friday 9 to 1.30, Saturday 9 to 12 noon, Sunday 9 to 11

Christmas/New Year opening DEC 24th and 27th and JAN 31st 9 to 11

The time has come to think about Christmas festivities (Oh yes it has!!)

Presents and goodies. Pop into the shop and see what we have on offer this year. We have **Festive Hand Wash and Bubble Bath, Trinket dishes and Chocolates for your stocking fillers**, teachers' gifts or just a little extra. You can also get your **gift wrap, cards and stamps** from us.

You can, as always, place **special orders** for **pies and bread** etc. for your parties. Please contact Sandra for details and a list of items available to order. 07951 880345.



That's Christmas, now for the daily routine of cooking **warm and tasty winter meals**. Get out the slow cookers and the casserole dishes. You can call into the shop for **fresh chicken, beef flank, sausages and bacon**.

Vegetables:- potatoes, carrots, swede, onions and maybe a turnip are all here. We have all the extra bits, stock cubes, pearl barley, dried herbs and suet for the dumplings (stews are not complete without a dumpling)! Frozen are available if you prefer. How about a dessert? **Fruit pies and custard, steamed sponge puddings** all available in store.

Come and have a peek, you might be surprised. **If you would like to join our volunteers, please get in touch, we are always on the look-out for extra help. We are a friendly lot. info@bentleystore.co.uk**

The Bentley Events Diary 2026

A new Bentley Events Diary for 2026 is now available for village groups to use for the coming year. It has been a useful tool this year when choosing a date for an event.

As before the aim of the diary is to enable groups within the village to arrange events so they do not coincide with other groups; therefore attracting the best possible audience numbers.

The diary is available to all groups and is kept at Bentley Stores - just ask one of the volunteers.

Please enter your event on the appropriate page giving the group's name, the time and location for the event.

"AMEN" CHRISTMAS SHOEBOX APPEAL 2025

A message of thanks to everyone who has supported the appeal this year. The response throughout the village has been incredible & on behalf of the Charity, Doreen & Alison would like to thank you so much for your support. Due to your generosity we were able to deliver **115 beautifully wrapped shoe boxes** to the area collection point in Capel St. Mary where they were received with grateful thanks.

The boxes have joined 373 others. We finished with a final total of 488 boxes, blankets and enough money to cover the transport! These have been loaded on the transport & are now on their way to Romania, where they will be given to the poorest of families in time for Christmas. We can only imagine the excitement & happiness of the arrival of our gifts, especially as its most likely the only Christmas gifts they will receive, so thank-you again for supporting & caring about these needy families.

Wishing you all a Very Happy Christmas. **Doreen & Alison, Local Co-ordinators**

**SOMETHING BRAND NEW
FOR ALL YOUNG PEOPLE
IN SCHOOL YEARS 6, 7, 8
Starts 6.30pm 4th January**

Moving Up!

snacks

faith

chat

table tennis

friends

music

games

be yourself

space

Club

Come and try our taster sessions
4th + 18th Jan & 1st + 15th Feb 6.30-8pm
St Michael's Brantham CO11 1PZ
contact: youth@constablebenefice.org

It's free, it's relaxed, it's a lot of fun and it's run
by the parish churches in East Bergholt,
Brantham, Bentley & Tattingstone

All leaders are fully DBS checked and have
completed the relevant safeguarding training

Footpath Society

No walks in December

BUT please remember

the New Year's Day

Walk

From the "The Case is

Altered" at 11.00 am.

Walks in January to be

advised on shop notice

board.

Happy Walking in 2026.

John and Colin

BENTLEY REFORMED BAPTIST CHURCH

“.. Fear not: for, behold, I bring you good tidings of great joy, which shall be to all people. For unto you is born this day in the city of David a Saviour, which is Christ the Lord.” (Luke 2v10-11)

**All welcome to hear about the birth of our Saviour on:
Sunday 21st 10.45am & Thursday 25th 10.00am
December 2025**

The above words were the first announcement to mankind of the birth of the Lord Jesus Christ. This announcement was made by the angel of the Lord, not to so-called important people, but to poor, lowly shepherds who were looked down upon by others.

And Jesus Himself, the eternal Son of God, left the glory of Heaven for a life of poverty and suffering on this Earth, as one who was: “.. despised and rejected of men; a man of sorrows, and acquainted with grief:” (Isaiah 53v3). Yet it was also a life of perfect obedience to His Heavenly Father.

His suffering reached its climax upon the cross, where He bore the eternal punishment for sin for all those who would come to repent of their sins, and believe and trust in Him.

This indeed is the “good tidings of great joy” - not the presents, decorations and celebrations that happen at this time of year, but the fact that “..Christ Jesus came into the world to save sinners..” (1 Timothy 1v15).

Do you know Jesus as your personal Saviour?

Regular Weekly Services:

Prayer and Bible Study – Tuesdays 7pm

Worship Services – Sundays 10.45am and 3pm

Admin: 07814 465222 www.bentley-reformed-baptist.uk
admin@bentley-reformed-baptist.uk

CAPEL ST MARY LIBRARY

Capel Library welcomes everyone! We are a small and friendly library based in the heart of the Capel community. We offer books, internet access, children's activities, tea and coffee, all with a friendly smile.

Warm Welcome

Here at Capel Library, we're offering free hot drinks! We still have a few items like soap and toothpaste that you can take if you need them.

Friends of Capel Library - December's Film:

The Friends of Capel Library Community Cinema



Tuesday 16th December 2025 at Capel Library

Doors Open: 7pm, Film Starts: 7.30pm

Tickets in advance: £4.50 members, £5 non-members

On the door: £5.50

Fully Licensed Bar & Air Conditioning

Jurassic World Rebirth

December's film will be on the **16th December** and we'll be showing Jurassic World Rebirth, where a "team hired to extract DNA from three of the largest remaining dinosaurs to develop a cure for heart disease. The mission takes them to Île Saint-Hubert, an abandoned research island now inhabited by genetic mutations and the surviving dinosaurs. The team, led by operatives Zora Bennett and Duncan Kincaid, includes palaeontologist Dr. Henry Loomis, and they must navigate dangerous mutated dinosaurs and confront a pharmaceutical company with ulterior motives."

Doors open at 7pm, film starts at 7:30pm. Tickets in advance: £4.50 for members, £5 for non-members, £5.50 on the door. Fully licensed bar!

Please keep an eye out on the Capel Library Facebook page for details of what January's film will be!

Christmas at Tot Rock

On Thursday the **18th December** we'll be having a special Christmassy session, so be sure to come along and dress up if you would like to! We'll still have our usual songs, but with a Christmassy twist.

Regular Events in the Library

Tot Rock and Stay & Play: Every Thursday from 9.30 onwards; songs, and stories followed by a more social play session with free refreshments.

Minecraft: Children of all ages welcome and those under eight must be accompanied by an adult. Please bring with you your tablet or phone equipped with Minecraft Pocket Edition or Minecraft Windows 10 Edition. Try to remember to charge your device

beforehand! Contact the library for more details.

Lego: Every 4th Saturday we hold our Monthly Lego Club. This is now completely free and you can drop in anytime between 10:30-12:30. We can also get out some Duplo or mega blocks for younger ones. Come and join us for some building fun!

Saturday and Sunday Crafts: We are now doing our craft sessions on Saturdays as well as Sundays! Drop in between 10.30-12.30 and get crafty at Capel Library. All children and families are welcome. All materials are supplied and there is no charge.

We welcome book and puzzle donations!

OPENING TIMES

Monday:	Closed	Friday:	2.00pm-5.30pm
Tuesday:	9am-12.30 & 2.00pm-5.30pm	Saturday:	9.00am-3.00pm
Wednesday:	9am-12.30	Sunday:	10.00am-3.00pm
Thursday:	9am-12.30		

Telephone: 01473 851370

e-mail: capel.library@suffolklibraries.co.uk Web: www.suffolklibraries.co.uk

Over the Christmas period we will be closed on the following dates:
December 24th, 25th, 26th and January 1st

THE FRIENDS OF CAPEL LIBRARY

100 CLUB DRAW RESULTS

October

£20 Ronald Currie
£10 Hilary Spink
£5 Jill Durrant

November

£20 Melvyn Sutcliffe
£10 Robert Smit
£5 Christopher Keeble

Prizes can be collected from The Library. Thank you for your support **Bob Perkin**



The Scrabble Club meets on the second and fourth Thursday of each month at 2.30 pm in the Village Hall Committee Room.

If you would like a gentle game of Scrabble, a cup of tea or coffee and a chat please come along and join us.

Dates of the meetings are shown on the Bugle diary page. Robin Owen

Paste Paper Paint



Bespoke Interior and Exterior Decorating in Suffolk and North Essex

by Simon Fenn

Mobile: 07429 612344

Email: pastepaperpaint@gmail.com



Essex & Suffolk
PEST SOLUTIONS

*Your local pest control experts for
home and business*

- Free advice, fast response
- Highly accredited (NPTA)
- Fully qualified and insured
- Discreet – unmarked vans

Email: info@eandspestsolutions.co.uk

T: 01473 328092

M: 07720 429999



Essex & Suffolk
PEST SOLUTIONS

Altered Image

Monu Appointed Salon

Capel Road, Bentley, Suffolk - 01473 311781



L'ORÉAL

Appointed salon

Special rates for senior citizens on
Tuesdays and Wednesdays

Now offering Sports massage
by appointment only

For face & body care

There's a face and body treatment to suit you!
Just give us a call to discuss your
personal requirements.

We also have a chiroprapist at the studio on Fridays

Opening hours:

Tuesday – Saturday 9am - 5pm



PRIMUS
FINANCIAL SOLUTIONS
**WEALTH MANAGEMENT
CONSULTANTS**



A wealth of expertise on your doorstep

We provide an experienced wealth management service and offer specialist advice in a wide range of areas including:

- Investment planning
- Retirement planning
- Inheritance Tax planning

For further details contact
David Catchpole on:
Tel: 01473 828456

Email: primus.david@sjpp.co.uk Website:
www.primusfinancial.co.uk



Deben Shutters
www.debenshutters.uk



Installed
in just 6-8
weeks



CALL TODAY TO ARRANGE A FREE DESIGN VISIT
07977 007 574 | hello@debenshutters.uk
Angel Cottage, Capel Road, Bentley, IP9 2DW



nantmor
BLINDS & SHUTTERS

Local manufacturers and suppliers of quality Blinds, Shutters and Awnings for over 40 years.

FREE Temporary Blinds whilst you wait for your fabulous new Blinds & Shutters

Call us today to arrange a free no obligation consultation or visit our fantastic showroom for inspiration:
1-2 Brindley Road, Clacton On Sea, C015 4XL

Roller • Vertical • Venetian • Day & Night
Cellular • Shutters • Roman • Allusion
Awnings • Perfect Fit • Wood Venetians

☎ 01255 475044 / 01206 791766 ✉ info@nantmorblinds.com

🌐 www.nantmorblinds.com 📺 Find us on Facebook

Bacon Farm Trust

BENTLEY, IP9

**STORAGE CONTAINERS & LIGHT
INDUSTRIAL UNITS TO RENT
FLEXIBLE TERMS**

Tel: 07836 731821 or 01473 310682

info@cabacon.co.uk

Collins

waste solutions...for a better environment

**For all your Skip Hire
& Aggregate needs,
call Collins today!**



Telephone:

01473 327596

Collins Skiphire, Folly Farm, Tattingstone

High Cutz Tree & Garden Care

Tree

- Removal
- Reduction
- Crown Lift
- Thinning
- Pollarding
- Coppicing
- Planting
- Tree Reports
- Woodland Management

**Fully Qualified and Insured with
Waste Removed Responsibly
Contact For Free Quote:**

➤ 01473 787356

➤ 07748101463

➤ Danielmeacock1@Hotmail.co.uk

Garden

- Grass Cutting
- Hedge Cutting
- Hedge Removal
- Hedge Reduction
- Shrub Pruning
- General Garden Maintenance
- Weed Spraying
- Contracts
- Estate Contracts