

**THE BENTLEY
BUGLE**



**COMMUNITY &
CHURCH NEWS**



ISSUE 105 - JUNE JULY 2025



A COMPANY THAT CARES

Mob: 07885 350722

100 The Street, Capel St Mary

Ipswich IP9 2EQ

saprior68@icloud.com

CAPEL STATION GARAGE

MOT's - Class 1, 2, 3, 4 & 7

Servicing & Repairs

Tel: 01473 730002 or 730033

Fax: 01473 730269

**Old Station Yard, Bentley Hall Road
Capel St Mary, Ipswich, IP9 2JL**

Mobile Foot Care Practitioner



FOOT CARE PRACTITIONER

Foot Health Check & Advice

Nail Trimming

Callus (Hard skin)

Cracked Heels

Corns

Verrucas

Fungal & Thickening Nails

Ingrown Toenail

Athletes Foot

07900541421

carrieg@btconnect.com

NELSON POTTER

QUALITY FENCING & GARDEN BUILDINGS

Fence Panels, Trellis, Willow Panels,
Post & Rails, Poles, Stakes, Wire
Netting, Sheds & Summerhouses

Local Deliveries £5

TEL: 01473 311905

Dodnash, Bergholt Road, Bentley IP9 2DQ

www.nelsonpotter.co.uk

Suffolk's First Co-operative Pub



Case is Altered

OPENING HOURS

Monday Closed

Tuesday Closed

Wednesday 6pm - 10pm

Thursday 6pm - 10pm

Friday 6pm - 10:30pm

Saturday 6pm - 10pm

Sunday 12pm - 3pm

For more information go to:

www.thecasepubbentley.co.uk

THE BENTLEY BUGLE - COMMUNITY AND CHURCH NEWS COORDINATORS

Editors - Marianne Munday (Production) & Christine Campbell (Copy)

Email: mariannebugle@gmail.com Copy to: christine.bugle@gmail.com

Treasurer - Marianne Munday

39 Silver Leys, Bentley, IP9 2BS

Tel: 07808 259331

Advertising - Christine Campbell - Email: christine.bugle@gmail.com

Little Orchard, Capel Road, Bentley, IP9 2BL

Distribution - Jane Day - Email: ellispark5363@yahoo.com

Greenacres, Capel Road, Bentley, IP9 2BL

Tel: 01473 310518

Church Correspondents - Sandra Mehen & Alison Partridge

Email: sandramehen@gmail.com

bentleychurchevents@gmail.com

19 The Link, Bentley

Tel: 01473 310383

The Bentley Bugle is published and distributed bi-monthly on a voluntary basis for the benefit of the local Village and Church community. Information is published in good faith and we reserve the right to edit copy submitted.

Errors and exceptions are regretted.

If you want to view a digital version of the Bugle these are uploaded to the Parish Council website - see bentleysuffolkparishcouncil.gov.uk/the-bentley-bugle/

Front cover

Gardner's friend - Bob Mawkes

If you have any suitable photos for future issues, please forward to Christine at christine.bugle@gmail.com

COPY FOR THE AUGUST- SEPTEMBER 2025 ISSUE SHOULD REACH **CHRISTINE BY NOON ON WEDNESDAY 23rd JULY 2025**. Copy can be submitted either on paper or electronically (preferred). Please try to ensure that any copy submitted electronically is in a standard format e.g. .doc, .docx, txt, .jpg, .png, or .pdf and the preferred font is Arial 14pt.

Bentley Directory

PARISH, DISTRICT AND COUNTY COUNCILS

Parish Council - Chair	Michael Bamford	07707 905889
Parish Council - Clerk	Joy Scott	01206 298174
Babergh District Councillor	David Busby	07855 777147
County Councillor	Georgia Hall	07955 434445

BENTLEY ORGANISATIONS AND CLUBS

Bentley Primary School		
(Headteacher)	Jo Austin	01473 310253
(Chair Governors)	Simon Hurst simon.hurst@copdock.suffolk.sch.uk	
(Chair PTA)	Sarah Hawley	07894 294319
Bentley Community Pub	Kate Spicer	01473 314187
Bentley Comrades	Ray Savage	01473 311122
Bentley Community Stores	Bob Feltwell	01473 310182
Bowls Club	Lillian Calvert	01473 808652
Carpet Bowls	Jill Mills	01473 311103
Case Book Group	Sandie Utton	01473 328241
Footpath Society	John Wheals	01473 310569
Footpath Warden	Tim Hamstead	07748 821594
Friends of St Mary's	Bob Feltwell	01473 310735
Horticultural Society	Mark Usher	01473 310322
Parent and Toddler Group	Pam Rayment	07970 741581
Recorders	Moira Usher	01473 310322
Scrabble Club	Robin Owen	01473 311844
Tree Warden	Colin Hawes	01473 310678
Tuesday Club	Veronica Howe	01473 310344
	Catherine Sweeney	01473 310095
Village Hall - Bookings	Veronica Howe	01473 310344
	Mark Usher	01473 310322
Village History Recorder	Nicky Moxey	01473 313125
Whist Club	Veronica Howe	01473 310344
Womens Institute	Sandra Ford	01473 31007

ST MARY'S CHURCH, BENTLEY

Rector	Rev'd Chris Willis	
Benefice Administrator	Michelle Jowers	07955 329341
Benefice email address	michelle@constablebenefice.org	
Churchwardens	Tom Hill	01473 311119
	Jane Day	07767 697351
Assistant Priest	Revd Don Mehen	01473 310383

BENTLEY BAPTIST CHURCH ADMIN 07814 465222

Bentley Parish Council website - <http://bentleysuffolkparishcouncil.gov.uk/>

Bentley (in Suffolk) Community Facebook page - <https://www.facebook.com/groups/292599697915731/>

Other village websites are listed in the publication.

Parish Diary

JUNE 25

- 3rd - Tuesday Club - Village Hall at 2.30pm
- 4th - Comrades - Village Hall - Blackmore Room at 7.30pm
- 5th - Parish Council Meeting - Village Hall from 7.30pm
- 7th - Beer, BBQ, Music - Case is Altered from 12.00 pm
- 7th - Food Vendor - Suffolk Spice Fusion - Case is Altered from 5-8 pm
- 12th & 26th - Scrabble Club - Village Hall, Blackmore Room at 2.30pm
- 12th - Open Mic Night - Case is Altered - from 8.00 pm
- 17th - Tuesday Club - Outing to Dunwich - 11.30 am
- 18th - Community Lunch - Case is Altered from 12pm
- 18th - Whist Drive - Village Hall - from 7.30 - 9pm
- 20th - Morris Men - Case is Altered - from 8 pm
- 19th - Food Vendor - Suffolk Spiced Fusion - Case is Altered - from 5 - 8pm
- 28th - Monthly Quiz - Case is Altered at 8pm

JULY 25

- 1st & 15th & 29th- Tuesday Club - Village Hall at 2.30pm
- 2nd & 16th - Whist Drive - Village Hall - from 7.30 - 9pm
- 2nd - Comrades - Village Hall - Blackmore Room at 7.30pm
- 3rd - Parish Council Meeting - Village Hall from 7.30pm
- 5th - Chilli and Jackets - Case is Altered at from 5 - 8 pm
- 9th - Bentley Bluebells WI - Village Hall 7.30pm
- 10th & 24th - Scrabble Club - Village Hall, Blackmore Room at 2.30pm
- 10th - Open Mic Night - Case is Altered - from 8.00 pm
- 13th - Annual Garden Party - Afternoon Tea - Case is Altered 3.00 to 5.30 pm
- 26th - Monthly Quiz Night - Case is Altered at 8pm

Other Activities in the Village

- Toddler Group - Mon & Weds 9.30am to 12 noon (term time only) Village Hall
- Holistic Yoga - Every Mon 7.30 - 10.00pm - Village Hall
- Aerobics Class - Tuesday 9.45am (Term Time only) - Village Hall (contact Jill Sharp for information - 01473 311546
- Carpet Bowls - Every Tuesday 7.30pm & Weds 2.30pm - Village Hall
- Coffee at the Case - every Friday between 10.30 and 12.00 noon.

BENTLEY VILLAGE AT CHURCH NEWS

SERVICES IN JUNE 2025

Sunday 1 st	10.30am Connect at Brantham with Rev Chris Willis followed by a garden party at The Rectory
Sunday 8 th	10am Morning Worship with Communion
Sunday 15 th	10am Morning Worship
Sunday 22 nd	10am Morning Worship with Communion
Sunday 29 th	10am Morning Worship

SERVICES IN JULY 2025

Sunday 6 th	10.30am Connect at East Bergholt with Rev Chris Willis
Sunday 13 th	10am Morning Worship with Communion
Sunday 20 th	10am Morning Worship
Sunday 27 th	3pm Annual Community Service followed by afternoon tea

The family of the late Janet Felgate would like to thank everyone who sent cards and kind messages over the last few weeks following the passing of Janet. All the kindness shown has brought great comfort.

£500 was collected and donated to the Alzheimer's Society.

SUNDAY SERVICES

If you would like to help at one of the services by doing a reading or leading the prayers, please let us know. New voices are always welcome. Please speak to any one of the people listed below.

EASTER SERVICES & BINGO

Thank you to those who attended the Easter Services.

Bingo was well attended and a fun night had by all, we raised just over £400.

EAST VILLAS

We continue to collect items for East Villas throughout the year. Don and Sandra Mehen are happy to receive them at their home or at any Church service.

We held the Annual Parochial Church meeting after the service on the 27th April. Tom Hill was re-elected as Church Warden for a 2nd year with Jane Day as our 2nd Church Warden. We wish them well in their roles.

The **PET SERVICE** was held on Sunday 11th May 2025. Lovely to see many pets and cuddlies in church, especially the tortoise!! Thank you for all the donations for the Blue Cross

HISTORY WALK and TALK

Thank you to those who attended and to Tom for the History Walk and Talk which took place on Sunday 18th May. Mr Tom Hill led a walk starting at St Mary's Church, heading North in a loop via Bentley Hall & Barn, Bentley Park, Old Hall Lane and back via Bentley Manor for refreshments which were enjoyed by all. All the proceeds have been donated to St Mary's Church.

DATES FOR YOUR DIARY

Harvest Festival Service – 14th September in St Mary's Church at 11 am.

Church Quiz night – 11th October at 7pm in Bentley Village Hall

Please note the Johnny Cash concert on 14th June has been cancelled.

The Biscuit League

Regular church goers, especially those who have been to all sorts of different churches, whether loud ones, quiet and reflective ones, pretty ones, or the not so pretty! etc., have been known to [jokingly] measure the quality of the church by the standard of the biscuits served after the service with teas and coffees!

Now at this point, it's important to stress, that one of the best parts of any church meeting is the time of friendship after the service, traditionally with a cup in your hand, and a biscuit! So, you may be wondering, what sort of biscuits are good in church terms? Now at the risk of upsetting some, it is generally (very tongue on cheek of course) said that a 'rich tea' church is.... *well*, to put it bluntly, one to stay well clear of, whereas a chocolate digestive serving church is an acceptable middle of the road standard. Some say that a chocolate hobnob is the pinnacle; but of course, you must make your own judgment. For me, it is a good buttery shortbread!

There is a serious point to this, (you will no doubt be relieved to hear, concerned perhaps that the Rector has his values all mixed up), and this is it: I absolutely love coming to Bentley to worship at our beautiful parish church. But it's what's inside I love so much, and that's a small, but wonderfully welcoming group of folk who have made Rachel and I so very welcome. If you want to know where St. Mary's is on the biscuits league? Well, let me tell you, it's in a whole new league of its own – indeed it's in the premiership of church hospitality and welcome....and at this point I thank all the folk who bring along not just biscuits – but, wait for it: homemade cakes, sausage rolls and more. And why? – because they are the friendliest and most welcoming group you could possibly hope to find, and they love people joining them to worship.

So, why not come and see for yourself what a friendly and welcoming bunch are already meeting and worshipping at St. Mary's, be part of them and discover who it is they come to worship? For He said of himself, '*I am the bread of life* ', and he feeds our very souls.

God bless you.

Rev. Chris, Rector

ALL WELCOME TO CLEAN THE CHURCH

Thank you to the volunteers so far who have come to clean the church. We will continue to clean our church on the 1st Saturday of the month from 10am. Please let Jane Day know if you would like to join us. (07767 697351). Tea and coffee will be available.

Church Contact Details for Weddings, baptisms, funerals or other enquiries

Church Warden – Tom Hill – 01473 311119

Church Warden – Jane Day – 01473 310518

Rector Constable Country Benefice – Rev Chris Willis –

revchris@constablebenefice.org

Administrator Michelle Jowers – michelle@constablebenefice.org

Assistant Priest – Rev Don Mehen – 01473 310383

Treasurer – Ken Felgate – k.felgate108@btinternet.com

PCC Correspondent – Sandra Mehen – 01473 310383

PCC Secretary – Jane Day – 01473 310518

Events & Tickets – Alison Partridge – bentleychurchevents@gmail.com

BENTLEY CARPET BOWLS

Our final match of the winter league saw us defeat Belstead 6 - 4 which was a good result, however over the whole season despite all our best efforts we were not quite good enough to stay in the 1st Division.

The total of 58 points was the best we have ever had but such is the standard in the division we still finished second bottom so will be playing at the second level again next season.

In the meantime we have the summer league, which is starting shortly, to look forward to. We recently played Tattingstone home and away for the Cynthia Page trophy which has been contested for a number of years in aid of charity.

This year Bentley ran out the winners in which proved to be two very enjoyable matches.

Any potential new players are always made very welcome for a social roll up on Tuesday evenings 7.30pm - 9.30pm and Wednesday afternoons 2.30pm - 4.30pm at Bentley Village Hall. **David Howe**

BENTLEY BOWLS CLUB

Our season has now started and we have got off to a good start. We have played five games winning 4 and gaining points in the game lost. New members have joined us and they have been very welcome.

We have had our quiz and again this was very successful. Many thanks to all who came to support us as this brings in much needed funds to keep the green in good order. We are having to water the green every evening and could do with some much needed rain - only overnight of course!

We have our club night on Friday evening from 6.30pm for a roll up so if you would like to try the game of bowls just come along. We have woods in the hut - you just need flat soled shoes. **Lillian Calvert Secretary 01473 808652**

BENTLEY (SUFFOLK) HORTICULTURAL SOCIETY

Monthly Meetings

Our last meeting was on Friday 16 May 2025 in the Village Hall when Maggie Piper gave an excellent talk on the new RHS Garden at Bridgewater. It was much enjoyed by all. On Saturday 17 May we held our annual Coffee Morning and Plant Sale. Thank you to all those who provided the plants and other items for sale. There was a raffle. A very pleasant morning. Thank you to all who came along giving their support.

The monthly meetings will resume in September -“Watch this space”

There is of course in the meantime **SATURDAY 9 AUGUST the VILLAGE SHOW.** The show is open to all MEMBERS to exhibit so there is lots to do at this time. There is a variety of classes - Flowers, Vegetables, Plants, Floral Art and Domestic (cooking) classes. Do have a look at the show Schedule and have a go! You could win a cup!!

Gardens to visit

At Maldon Essex there is Beeleigh Abbey It is best to go when the roses are in bloom –there’s over a hundred. It’s usually only open on Fridays so best to check the website visitmaldon.co.uk/beeleigh-abbey or telephone 07506 867122 there are refreshments/ free parking and plant sales

Enjoy the summer hope it will be bit warmer than of late. **Pam Lovell**

TUESDAY CLUB

The weeks are flying by and we are already half way through the year. Since our last news our Members have enjoyed Music and Songs from Harbour Lights. Jan gave a talk with slides on the activities provided by the riding school for the disabled, a donation was made by the members to the school.

Our first session of Chair Aerobics was given by our new Instructor Mandy who was a hit with our Members. In the coming weeks Sonya will give a talk on ‘Drought Gardening’.

Our first outing of the year is on 17th June when our members will be taken to Dunwich by Coach, where all will enjoy Lunch in The Flora Tea Rooms. Photographer Kevin Pigney will talk and exhibit his work on local Wild Life. Mandy will be back for another round of Chair Aerobics and Ball games. To finish off the month of July Griff Johns will give a talk on ‘The Marine’.

If there is anything that you think might interest you then please come and join us we will be happy to welcome you. **Catherine Sweeney, Secretary**

NOTES FROM THE CASE



Suffolk's first Co-operative Pub!

Tel: 01473 805575

<http://www.thecasepubbentley.co.uk/>

<https://www.facebook.com/TheCaseBentley/>

email: chair@thecasepubbentley.co.uk



Here at the Case we have been really enjoying the glorious weather we've had over the last few weeks. It really helped to make our VE-Day 'Superior Afternoon Tea' a wonderful success! All profits from the Afternoon Tea sales are being donated to the **Royal British Legion** so a cheque for £600 is being sent their way. Also over £270 from the raffle will be added to our running total for our new charity of the year **EACH, East Anglia Children's Hospice**. With such lovely weather we can only hope that it will last the whole summer long!

Beer, BBQ, Music and more

On **Saturday 7 June** we are holding our, now, annual Music, BBQ and Curry afternoon and evening event. We are again happy to have some of Bentley's very own musical talent, Brooke Telling and Random Pieces, plus a few of the regular Open Mic Night guests. Just bring a deckchair or blanket and sit back and enjoy the entertainment. The **pub will be open from 12:00pm**. The **BBQ starts at 1pm**. The **music will begin around 2pm**. Between **5pm - 8pm**, the very popular street food vendors, **Suffolk Spice Fusion** will be with us.

Open Mic Nights

Our Open Mic Nights are always very popular and continue to attract some excellent musicians and singers. The next two evenings are **Thursday 12 June** and **Thursday 10 July**. Music starts at around 8pm. As always a PA is provided, all performers welcome! Further enquires and dates, please contact Dave on 07885 963882 or look on our website or Facebook page.

Community Lunches

The next Case community lunch is planned for **Wednesday 18 June**. Our monthly meals continue to be very popular and have been over subscribed each time. As before please sign up using the form in Bentley Stores. Due to our annual Garden Party event in July there will not be a community lunch that month but they will be back in August. **All are welcome.**

Morris Men

On **Friday 20 June** we have a return visit from the **Colchester Morris Dancers**. The group are a Morris Ring side from North Essex. They have recently had to drop the title Morris Men as they are now a mixed side and have ladies Morris Dancers in their group. They will be performing many of their traditional Cotswold dance routines outside the pub **from 8pm**.

Annual Garden Party

On **Sunday 13 July** we will be holding our annual **Garden Party** from **3pm to 5pm**. The pub will be open **12pm to 6pm**. There will be cakes and savouries, tea and coffee, games and competitions. During the afternoon there will also be live music from **John Campbell and Friends**. Nearer the date tickets will be available in the shop and the

pub. Entry is free but tickets will entitle you to a free cuppa and gives us an indication of numbers. **Cake or savoury donations will be warmly welcome.** For more details look for the posters around the pub closer to the event date or on our website and Facebook page. All profits will go to our charity of the year, **EACH, East Anglia Children's Hospice.**

Quiz Nights

Quiz nights continue to be firm favourite and it can sometimes be a tight squeeze to fit everyone in, so do come early if you want to guarantee a table. Our next two quiz nights are **Saturday 28 June** and **Saturday 26 July**. Quiz nights support our chosen charity each month with all profits from the quiz and raffle going to our charity of the year, **EACH, East Anglia Children's Hospice.** **Quiz starts at 8pm.** As always teams are up to 6 people, entry £2 per person. First prize, £36 in pub vouchers. Losers are awarded a wooden spoon.

Street Food Events

As stated previously we are welcoming back **Suffolk Spice Fusion** on **7 June** as part of our music event. They will be with us from 5pm to 8pm as normal. Walk ups or pre-orders available. If you wish to pre-order, please use **WhatsApp on 07931 887293.** On **Saturday 5 July** we have our very own **Case Catering Team.** They will be providing '**Chilli and Jackets with sides**' – there will also be a vegetarian alternative. Take away will also be available. They will be serving **5pm to 8pm** as usual. **Families welcome.**

New Art

We have a new exhibition of artwork displayed on our walls for the next few months. These are all the creations of local artist Craig Whale. Six years ago Craig closed his art studio as he found he could no longer paint using traditional techniques due to poor health. However he was able to create artwork digitally using a drawing tablet and stylus. Although he can no longer physically walk through the beauty of rural nature to observe it, he uses his imagination to stroll through fantastical landscapes and these artworks recreate what he sees in his minds eye. All pieces are for sale, see the attached labels.

Save the Date

On **Sunday 24 August** (Bank Holiday Sunday) we are inviting back one of our favourite entertainers Robbie Gladwell and friends. Music will start around 3pm. As always the pub will be open from 12pm. There will also be a **BBQ from 1pm.** For more information see the next Bugle or posters around the pub closer to the date.

VE-Day

Finally we'd like to give a big thank you to all who came along to our VE-Day commemoration event during the evening on the 8 May. The national proclamation was read out as was the Tribute. We also lit our Lamp Light of Peace and, along with the rest of the country, we listened (and some sang along) to the hymn 'I Vow to Thee My Country'.

We hope to see you soon.



WI BENTLEY BLUEBELLS



Our fundraising lunch's theme was VE day, as you can see on the pictures. We served a sausage casserole with mash potatoes and broccoli. The puddings were also of the era, like steamed puddings, as well as rhubarb and mixed fruit crumbles and trifle. We would like to thank everyone who came to support us.



Our next meeting will be a trip to the food museum, in Stowmarket. Our July meeting, we will be entertained by a ukulele band.

Ladies, we are always open to new members. For more information, please contact our secretary Emma on +447485017293.



WILDLIFE NOTES

The Hazel Dormouse - a rare and declining animal



Dormouse in Hazel (photo by Alison Looser)

Hazel dormice are one of our most attractive small mammals with distinctive, bright golden fur and a bushy tail. This makes them stand out when compared with other mouse-sized animals such as wood mice. Dormouse habitat: they spend their lives in deciduous, ancient woodland especially where there are trees with edible seed, or they can be found in ancient hedgerows where there is a varied mix of woody species. Up in the branches of trees or shrubs, they feed on a wide variety of flowers, fruits, nuts and insects. Except for hibernation they rarely descend to the ground.

Although dormice are rarely seen their presence can be shown by examining fallen hazel nuts. Hard hazel nut shells that have been chewed by dormice have a characteristic opening, a distinctive, round hole, with oblique tooth marks around the cut edge.

Dormice construct summer nests in shrubs and brambles but these proved difficult to find. This problem was resolved by experimenting with artificial nest boxes and nest tubes to find out if dormice would use them. These were successful and dormouse surveys are now carried out using the artificial nests.

In 2002, the 'Essex and Suffolk Dormouse Project' was set up, with support from English Nature (now Natural England) to undertake surveys within the two counties. Nest boxes and nest tubes were used which proved there were dormouse sites in Suffolk with clusters within Bentley, Polstead, and Assington, each cluster representing a small population. There are also isolated records from Raydon, and Sudbury.

Dormouse temporarily removed from its nest box in Bentley Long Wood in Colin Hawes' hand (photo by Alison Looser)





GARDEN PARTY AT THE CASE – ALL WELCOME!

SAVE THE DATE for our very popular village Garden Party at
The Case is Altered, Bentley.

SUNDAY 13 JULY 2025 from 3.00pm

As always we rely on our wonderful village bakers to pick up their wooden spoons and contribute to the feast. You haven't let us down yet.

If you've been in earlier years you'll know the spread is magnificent. **Any profits will go to the pub's charity for this year, East Anglia Children's Hospice.**

Nearer the time there will be tickets in the shop and the pub. Entry is free but this gives us an idea how many to expect, and the ticket will entitle you to a free cuppa. **There will be live music and a game or two.**

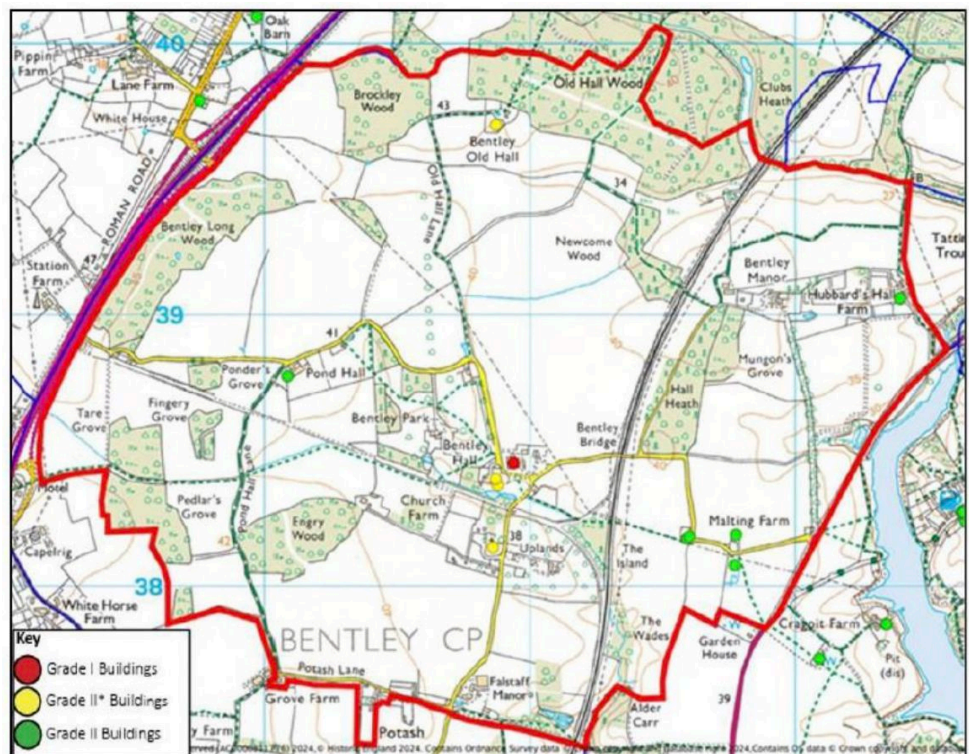
Home-made cakes/savouries can be delivered to the pub at **any time after 10am on the day.**

See you there!

BENTLEY CONSERVATION AREA

Babergh District Council, having fully considered the consultation responses, on 23rd April 2025 designated the area outlined in red on the map as **Bentley Conservation Area**

Further information can be viewed on Babergh District Council's website - www.babergh.gov.uk/conservation-area-consultations



BENTLEY REFORMED BAPTIST CHURCH

Jesus was: "... declared to be the Son of God with power, ... by the resurrection from the dead:" (Romans 1v4)

All welcome to hear about the way of salvation in the

Lord Jesus Christ

Every Sunday at 10.45am

When Jesus was dying upon the cross, many mocked Him with scorn and hatred, wanting to see Him discredited and destroyed.

This included challenging Him to prove who He was: **"If thou be the Son of God, come down from the cross."** (Matthew 27v40). **"He saved others; himself he cannot save."** (Matthew 27v42)

They saw Him hanging there as a sign of weakness and failure.

In fact, the opposite is true; the cross is the centre of the Gospel, of which the apostle Paul writes: **"For I am not ashamed of the gospel of Christ: for it is the power of God unto salvation to every one that believeth;"** (Romans 1v16)

Jesus willingly suffered, bled and laid down His life upon the cross to pay the penalty for all the sins of all His people. On the third day He rose from the dead. by His own power, proving that He is the eternal Son of God, and that He had fully paid that penalty.

Had Jesus come down from the cross, there would be no hope for any of us. But if we repent of our sins and believe and trust in Him, then our sins are forgiven, we are made right with God, and we will go to be with Him forever in heaven.

Regular Weekly Services:

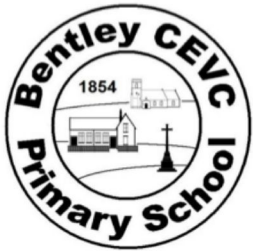
Prayer and Bible Study – Tuesdays 7pm

Worship Services – Sundays 10.45am and 3pm

Admin: 07814 465222 www.bentley-reformed-baptist.uk

admin@bentley-reformed-baptist.uk

NEWS FROM BENTLEY & COPDOCK PRIMARY SCHOOLS



Bentley Primary 01473 310253
admin@bentley.suffolk.sch.uk

Copdock Primary 01473 730337
admin@copdock.suffolk.sch.uk

<http://www.bentleycopdock.co.uk/>



The summer term has been a very busy term. This half term we have celebrated St George's Day & VE Day with special lunches. We have enjoyed specialist coaching in cricket and padel at Copdock & Ol cricket and tennis facilities. We've also participated in netball, cricket and football festivals putting our skills into play. The children really thrive during the many summer sporting opportunities, and it is always lovely to celebrate this at our annual sports day where parents join us for a picnic lunch and cheer their children on.

Adders class had a trip to Woodbridge to see the Longshed as part of their exciting history topic, and Hedgehogs had a tour around Colchester to explore the Romans. Wolves visited Colchester Zoo as part of their learning about animals, habitats and climate.

Year 4 also had an exciting sleepover in school with their friends from Copdock Primary School. They had fun building dens, playing team games, having a water fight, and singing songs round the campfire before finally falling asleep in the school hall.

As part of our learning for life curriculum, some year 5 and 6 children took part in Bikeability, demonstrating important bike safety on the road. This builds on from our bikes and scooter skills developed in the younger years.

Year 6 embraced the challenge of SATs and celebrated with a special sporting session. Thank you to Mrs Robinson for supporting them so well and developing resilient and dedicated learners. We wish them all the best for their transition to High School.

We are looking forward to welcoming our new children into school after the summer break. If you are still looking for a place for your child for September, we do have a few spaces in some of our year groups, Contact the office for more information and to have a look around.

Governor vacancy – if you are keen to make a difference, we would love to hear from you. We do currently have a vacancy for a Governor and would like to welcome someone new to join our team.

We wish all our families and the wider community a safe and happy summer break.

BENTLEY PARISH COUNCIL

Bentley Annual Parish Council Meeting took place at Bentley Village Hall at 7.30pm on Friday 9 May 2025

Five Councillors, Tree Warden, Footpath Warden, Speedwatch and 3 members of the public attended the meeting.

The outgoing Chair welcomed everyone to Bentley's Annual Parish Council Meeting – the first item on the agenda before the meeting could commence was to elect the Chair and Vice Chair for the forthcoming year. Cllr Munday and Cllr Feltwell stepped down from their roles. Cllr Bamford was willing to stand as Chair and was duly elected in his absence. Cllr Wheals agreed to stand as Vice Chair – he was duly elected and took the Chair for this meeting - the Declaration of Acceptance of Office forms were duly signed and witnessed.

Apologies were received from Cllr M Bamford, Cllr B Feltwell, Cllr D Jones, Cllr A Thomas, County Councillor Georgia Hall, and District Councillor Dave Busby

Planning – There was two planning decisions and two planning applications – both were recommended for approval.

Reports were received from County Councillor Georgia Hall and Tree Warden

Matters discussed:

- Bentley Conservation Area – This has now been designated.
- Brockley Wood application has gone out for re-consultation again as a result of the Conservation Area being designated. **Responses need to be in by 8th June.**
- Review of the Neighbourhood Plan – Our Consultant has carried out the planned review and is preparing a report for the policies which need to be changed.
- Grants were awarded to Village Organisations and other Organisations
- Annual Playground Inspection Reports were discussed.
- Copse – Decision was taken on the next stage. £1,200 was granted from the Parish Council's CIL Funds to make area usable in the short term.
- Affordable Housing – Meeting to be arranged with Housing Enabling Officer at Babergh, CAS and Hastoe.
- Playing Field Society – Written agreement with Brantham Athletic for their use of the Playing Fields has not yet been signed – this will be done asap.
- To discuss Suffolk Highways proposals re Not Suitable for HGV signs – Councillors not happy with Suffolk Highways solution – will continue to review.
- Comments on how nice the playing field, play and gym areas look since Vertas took cutting these areas.

The meeting closed at 9.10 p.m. Full draft minutes are available on the P C website - <http://bentleysuffolkparishcouncil.gov.uk/>

Constable Country Medical Practice News and Updates

Please find some information below that we hope you will find helpful when engaging with us in the future.

Online Consultation: To optimise the online consultation service, the Practice has invested in a new online system named ACCURX TRIAGE. This system has replaced the E-CONSULT service and can be utilised similarly, including for administrative and appointment requests. All requests are activated within 48 working hours and can be accessed via the Practice website.

Ordering Prescriptions: The Practice requires 72 hours to process repeat prescription requests. There are several methods available for this:-

Via the NHS App OR Via the NHS website OR Through the pharmacy by sending an Email to comp.prescriptions@nhs.net or finally place a paper request order form in the box in the reception area at the Practice.

The Practice now boasts a more diverse team of clinicians, including traditional GPs, nurse practitioners, paramedics, and clinical pharmacists. This team enables the Practice to offer a wider range of services based on the needs of its patients.

The Practice is busier than ever and now has over 11,150 registered patients. It is taking all appropriate measures to manage the growing demand and requests that patients remain kind and respectful to all staff when interacting with them.

The Patient Participation Group (PPG) comprises of patients registered with the Practice. It meets bi-monthly with the Practice Manager and GPs to discuss topics of mutual interest with a view to improving the long-term quality of patient care and the patient experience. The PPG welcomes new members, and if interested, there is more information on the Practice website or, for an informal discussion with a current member, contact details are on waiting room notice boards or can be obtained from the Practice.



The Scrabble Club meets on the second and fourth Thursday of each month at 2.30 pm in the Village Hall Committee Room.

If you would like a gentle game of Scrabble, a cup of tea or coffee and a chat please come along and join us.

Dates of the meetings are shown on the Bugle diary page. Robin Owen

BENTLEY COMMUNITY STORES

WE ARE OPEN EVERY MORNING

Weekdays 9 to 1.30

Saturday 9 to Noon

Sunday 9 to 11

It's Summer!!

The summer has arrived, we hope! and your shop is gearing up to cater for all your Picnic, BBQ and Alfresco dining needs.

We have a range of delicious, locally produced Apple Juice, perfect to chilled on a hot summer day. For a treat, you could add something sparkling for a refreshing spritzer.

Summer fruits will soon be in full swing. Glorious strawberry jewels to adorn your breakfast or desserts. Juicy raspberries to come a little later.

Back to the old favourites: a variety of Pies, Quiches and Tartlets with all sorts of exciting fillings are available in the shop or for special order.

For your BBQ we have Burgers and Sausages from East End Butchers. We can cater for your special orders for these as well.

Now for the bread! A large variety of breads are available, plus hot dog and burger rolls, along with a large range of focaccia breads for special order. **(We need 24hours notice, Monday to Friday for special orders).**

For your special orders please call Sandra on 07951 880345

If it's too hot for you, come in and take a look in our Ice Cream freezer and choose from a quenching fruity lolly or a chocolate treat. In our main freezer, you will find a selection of family ice cream tubs in a variety of flavours.

This is just small selection of what we can offer. Come and visit our Aladdins Cave of goodies and be surprised and delighted at what you find.

We are always on the lookout for new volunteers to help in the running of our shop, either to serve the customers or to work behind the scenes. If you are interested in joining our happy band of volunteers please get in touch.

You can email us at info@bentleytstores.co.uk

CAPEL ST MARY LIBRARY

Capel Library welcomes everyone! We are a small and friendly library based in the heart of the Capel community. We offer books, internet access, children's activities, tea and coffee, all with a friendly smile.

Warm Welcome

Suffolk Libraries have always provided safe, warm spaces for anyone to come and spend time in or find support and resources. Even though the weather is warming up now, we're still offering free hot drinks and some essential items like soap, toothpaste and shower gel as part of our warm welcome. You are always welcome to use the computer and charge your devices too.

The Friends of Capel Library Community Cinema

June's film: Saturday Night

Our film night will be on the 17th June and we'll be showing Saturday Night, which "tells the unassuming story of a group of Brooklyn boys, trying to make good in the stock market in 1929. Unfortunately, one of them, Gene, is so eager to climb the social ladder and impress his sweetheart that he invests his friends' money in a swank apartment near the Brooklyn Bridge, even going so far as to sell the gang's precious automobile!"

Doors open at 7pm, film starts at 7:30pm. Tickets in advance: £4.50 for members, £5 for non-members, £5.50 on the door. Fully licensed bar!

Please keep an eye out on the Capel Library Facebook page for details of what July's film will be!

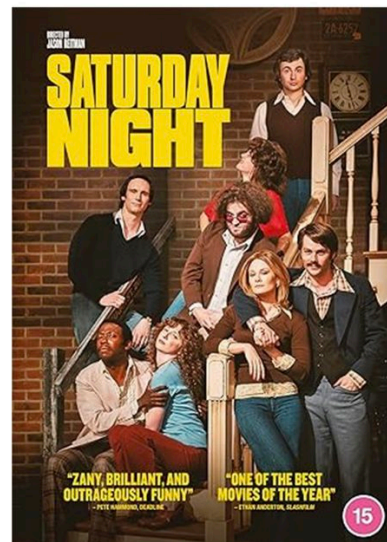
Home Library Service

We're currently looking for a Home Library Service volunteer. If this is something you'd be interested in doing or would like some more information, please contact Capel Library.

Regular Events in the Library

Get Connected sessions: We now have Get Connected sessions on the 2nd and 4th Tuesday of every month between 10-12. If you're struggling with anything technology

The Friends of Capel Library Community Cinema



Tuesday 17th June 2025 at Capel Library

Doors Open: 7pm, film Starts: 7.30pm

Tickets in advance: £4.50 members, £5 non-members

On the door: £5.50

Fully Licensed Bar & Air Conditioning

related, please pop along and our volunteer with help you! You can just turn up, but if you phone the library and book a place, we can let our volunteer know what you need help with.

Tot Rock & Stay & Play: Every Thursday from 9.30 onwards; songs, and stories followed by a more social play session with free refreshments.

Minecraft: Children of all ages welcome and those under eight must be accompanied by an adult. Please bring with you your tablet or phone equipped with Minecraft Pocket Edition or Minecraft Windows 10 Edition. Try to remember to charge your device beforehand! Contact the library for more details.

Lego: Every 4th Saturday we hold our Monthly Lego Club. This is now completely free and you can drop in anytime between 10:30-12:30. We can also get out some Duplo or mega blocks for younger ones. Come and join us for some building fun!

Saturday and Sunday Crafts: We are now doing our craft sessions on Saturdays as well as Sundays! Drop in between 10.30-12.30 and get crafty at Capel Library. All children and families are welcome. All materials are supplied and there is no charge.

We welcome book donations, and don't forget we sell cards and stamps too!

OPENING TIMES

Monday:	Closed	Friday:	2.00pm-5.30pm
Tuesday:	9am-12.30 & 2.00pm-5.30pm	Saturday:	9.00am-3.00pm
Wednesday:	9am-12.30	Sunday:	10.00am-3.00pm
Thursday:	9am-12.30		

Telephone: 01473 311699

e-mail: capel.library@suffolklibraries.co.uk **Web:** www.suffolklibraries.co.uk

THE FRIENDS OF CAPEL LIBRARY

100 CLUB DRAW RESULTS

April

£20 Keith Gilbert
£10 Diana Wright
£5 Terry Bywater

May

£20 Steve Lodge
£10 Wendy Alcock
£5 Catherine Cornell

Prizes can be collected from The Library. Thank you for your support.

Bob Perkin

MEN'S BICYCLE FOR SALE
10 GEARS - AS NEW - HELMET INCLUDED!!
£100
PLEASE PHONE 01473 311079

MAJOR PLANNING APPLICATIONS UPDATES

Brockley Wood Quarry and Waste Processing Plant - SCC/0105/22B

The Development and Regulation Committee were due to consider this re-application at their meeting on 24th April after a previous deferral. However on 23rd April, Bentley Conservation Area was designated. As a result of this, the re-application was removed from the Agenda and there is now a further round of re-consultation following responses from the applicant on Heritage, Landscape, Air Quality, Noise, Traffic and Transport, Access Design, Location of processing plant and supporting plans and drawings.

There have been no changes made to the siting of the Waste Processing plant although the concrete crushing won't be included in an early phase.

If you wish to make any representations, the consultation deadline is **8 June 2025**, you can:

- Write to: The Head of Planning, Growth, Highways & Infrastructure, Endeavour House, 8 Russell Road' Ipswich. IP1 2BX
- Email to: planning@suffolk.gov.uk or;
- Submit an on-line representation at: <https://suffolk.planning-register.co.uk/Planning/Display?applicationNumber=SCC%2F0105%2F22B>

The Parish Council will be submitting another representation and will keep residents updated about this application via the Bentley Facebook page, Parish Council meetings and The Bugle.

THE CASE COMMUNITY LUNCH

The next lunch will be on

Wednesday 18 June for 12.30 pm.

All are welcome but places are limited, so **book early.**

Cost is £12 per head.

The booking sheet will be in the shop from 1 June.

NB: There will be no lunch in July

FOOTPATH SOCIETY

For summer Footpath Walks please refer to the shop external notice board for details and / or ring John on 310589 or Colin on 310678.



I want to concentrate on Anti-social behaviour for the topic of this article. What does it look like? Where can it occur? Who does it effect?

ASB is a range of actions which can cause someone alarm, harassment and distress and annoyance. This can be to individuals or communities. It can occur in homes as well as in the public. It can affect anyone and everyone. It is often exacerbated with the change in weather.

Here are some examples of what I'm seeing in and around my patch:



- 1) Breaking into derelict buildings and vandalism
- 2) Off road motorbikes riding on land without permission and when confronted- being abusive
- 3) Smoking cannabis in gardens - especially as the weather is nicer now, the smell is potent and unpleasant
- 4) Vehicle meets and racing, generally with loud exhausts.
- 5) Deliberately starting fires
- 6) Drunk and disorderly behaviour
- 7) Use of inappropriate language/shouting

These are just a few, I could keep writing but I'm on a limited word count. You will see that some of these will fall into the criminal realm as well.

This type of behaviour has often been going on for years, the off-road motorbikes that are ridden in Bobbits Lane for example, it is not an easy fix to stop it.

There is often a cross over in which agency is more appropriate to deal with the issue and I work very closely with the community safety team at Babergh and Mid Suffolk District council. If you are wanting to report ASB then I urge you to report it to both the Police and the Council. If you are a tenant, then your housing provider. If its regarding school children, please let the school know.

Sometimes we don't know our actions are causing upset to someone else. Please pause and think, how would I feel if the situation was reversed?

If you need to report a crime, please use the online service on the Suffolk Police website or call 101. PC Katie Jarrett.

Paste Paper Paint



Bespoke Interior and Exterior Decorating in Suffolk and North Essex

by Simon Fenn

Mobile: 07429 612344

Email: pastepaperpaint@gmail.com



Essex & Suffolk
PEST SOLUTIONS

*Your local pest control experts for
home and business*

- Free advice, fast response
- Highly accredited (NPTA)
- Fully qualified and insured
- Discreet – unmarked vans

Email: info@eandspestsolutions.co.uk

T: 01473 328092

M: 07720 429999



Essex & Suffolk
PEST SOLUTIONS

Altered Image

Monu Appointed Salon

Capel Road, Bentley, Suffolk - 01473 311781



L'ORÉAL

Appointed salon

Special rates for senior citizens on
Tuesdays and Wednesdays

Now offering Sports massage
by appointment only

For face & body care

There's a face and body treatment to suit you!
Just give us a call to discuss your
personal requirements.

We also have a chiropodist at the studio on Fridays

Opening hours:

Tuesday – Saturday 9am - 5pm



PRIMUS
FINANCIAL SOLUTIONS
WEALTH MANAGEMENT
CONSULTANTS



A wealth of expertise on your doorstep

We provide an experienced wealth management service and offer specialist advice in a wide range of areas including:

- Investment planning
- Retirement planning
- Inheritance Tax planning

For further details contact
David Catchpole on:
Tel: 01473 828456

Email: primus.david@sjpp.co.uk Website:
www.primusfinancial.co.uk

High Cutz Tree & Garden Care

Tree

- Removal
- Reduction
- Crown Lift
- Thinning
- Pollarding
- Coppicing
- Planting
- Tree Reports
- Woodland Management

**Fully Qualified and Insured with
Waste Removed Responsibly
Contact For Free Quote:**

➤ 01473 787356

➤ 07748101463

➤ Danielmeacock1@Hotmail.co.uk

Garden

- Grass Cutting
- Hedge Cutting
- Hedge Removal
- Hedge Reduction
- Shrub Pruning
- General Garden Maintenance
- Weed Spraying
- Contracts
- Estate Contracts



nantmor
BLINDS & SHUTTERS

Local manufacturers and suppliers of quality Blinds, Shutters and Awnings for over 40 years.

FREE Temporary Blinds whilst you wait for your fabulous new Blinds & Shutters

Call us today to arrange a free no obligation consultation or visit our fantastic showroom for inspiration:
1-2 Brindley Road, Clacton On Sea, C015 4XL

Roller • Vertical • Venetian • Day & Night
Cellular • Shutters • Roman • Allusion
Awnings • Perfect Fit • Wood Venetians

☎ 01255 475044 / 01206 791766 ✉ info@nantmorblinds.com

🌐 www.nantmorblinds.com 📺 Find us on Facebook

Bacon Farm Trust

BENTLEY, IP9

**STORAGE CONTAINERS & LIGHT
INDUSTRIAL UNITS TO RENT
FLEXIBLE TERMS**

Tel: 07836 731821 or 01473 310682

info@cabacon.co.uk

Collins

waste solutions...for a better environment

**For all your Skip Hire
& Aggregate needs,
call Collins today!**



Telephone:

01473 327596

Collins Skiphire, Folly Farm, Tattingstone



Deben Shutters

www.debenshutters.uk



Installed
in just 6-8
weeks



CALL TODAY TO ARRANGE A FREE DESIGN VISIT

07977 007 574 | hello@debenshutters.uk

Angel Cottage, Capel Road, Bentley, IP9 2DW