



MEASUREMENT REPORT

01/06/2026



<https://www.elancity.co.uk>



Device information	3
Average speeds	4
Percentile	5
Speed distribution towards Inbound direction :	6
Speed distribution towards Outbound direction :	7
Vehicles per hour	8
Maximum speeds	9



Name ELANCITY RADAR
Zone 30 MPH
Period From Wednesday 26 February 2025 14:30
To Monday 1 June 2026 13:27

Device information

Comment:

location

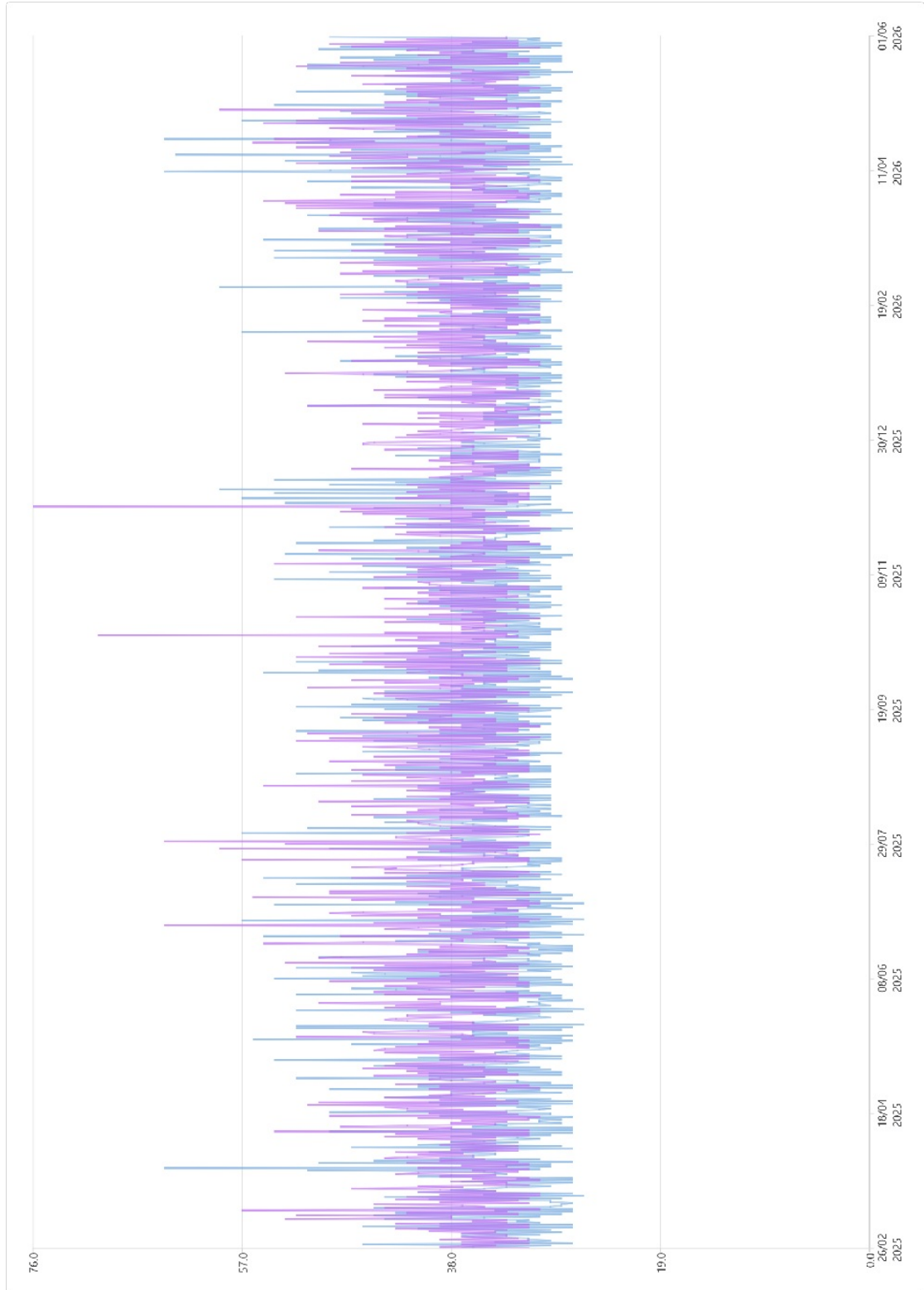
Name	ELANCITY RADAR
Sens Entrant	
Sens Entrant	
Posted speed limit	30 MPH
Comment	
Device type	Radar

Period	From Wednesday 26 February 2025 14:30 To Monday 1 June 2026 13:27
Number of measurement days	461
Number of vehicles inbound	538 972
Number of vehicles outbound	602 204
Maximum recorded speed	165 MPH



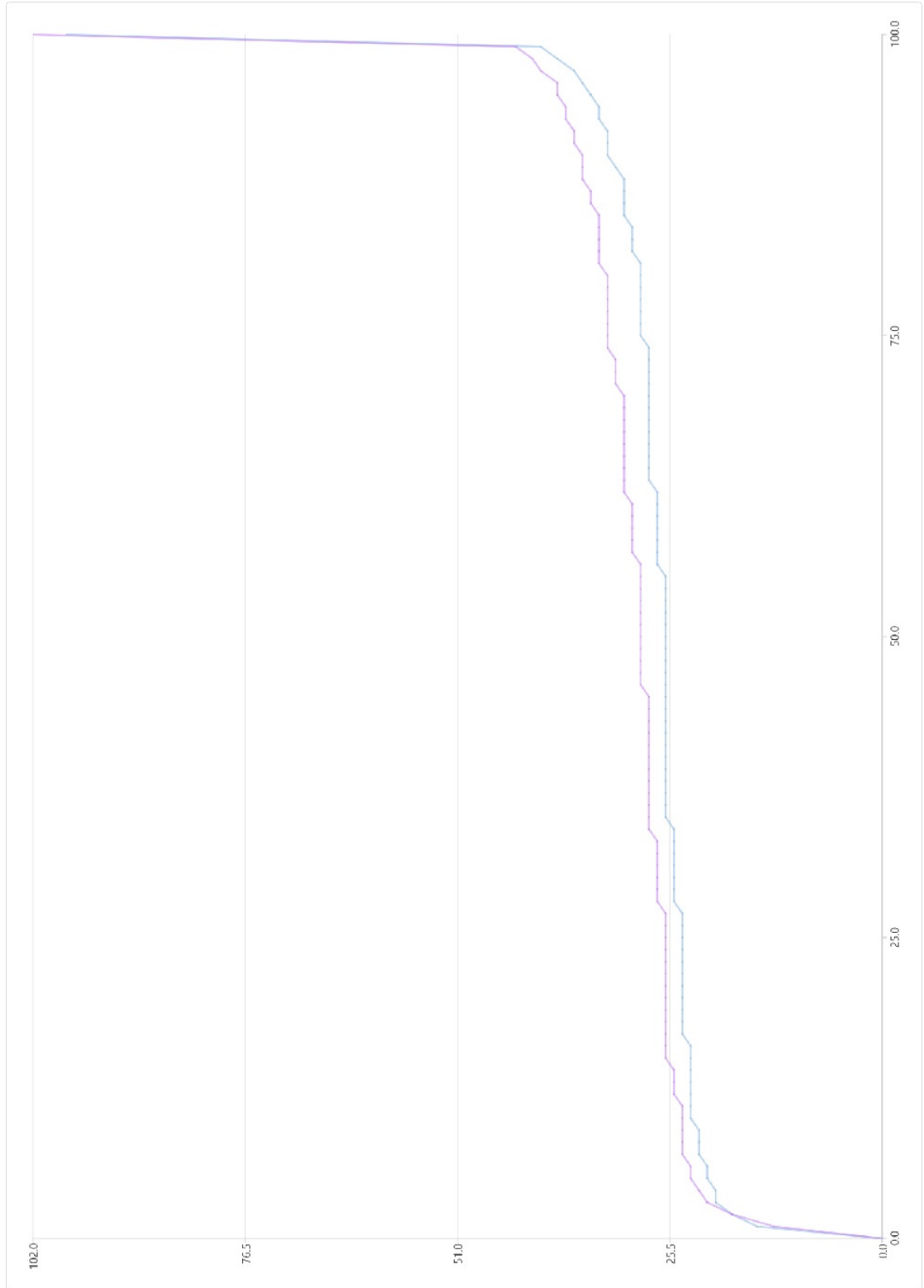
Name ELANCITY RADAR
Zone 30 MPH
Period From Wednesday 26 February 2025 14:30
To Monday 1 June 2026 13:27

Average speeds



Maximum average speed:
Inbound direction : 64 MPH

Outbound direction : 76 MPH

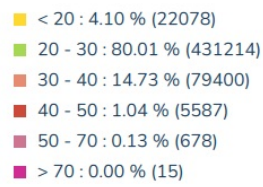
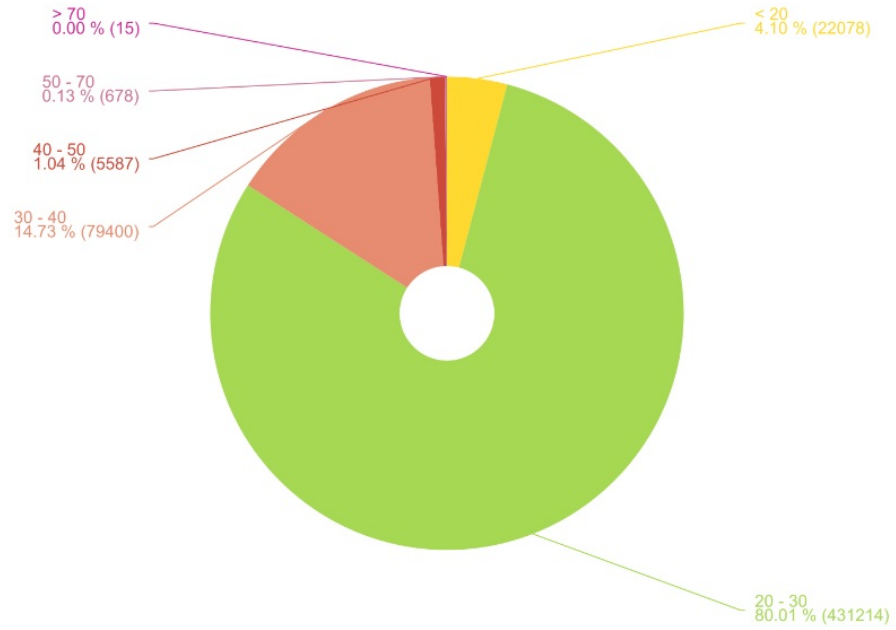


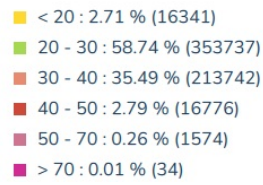
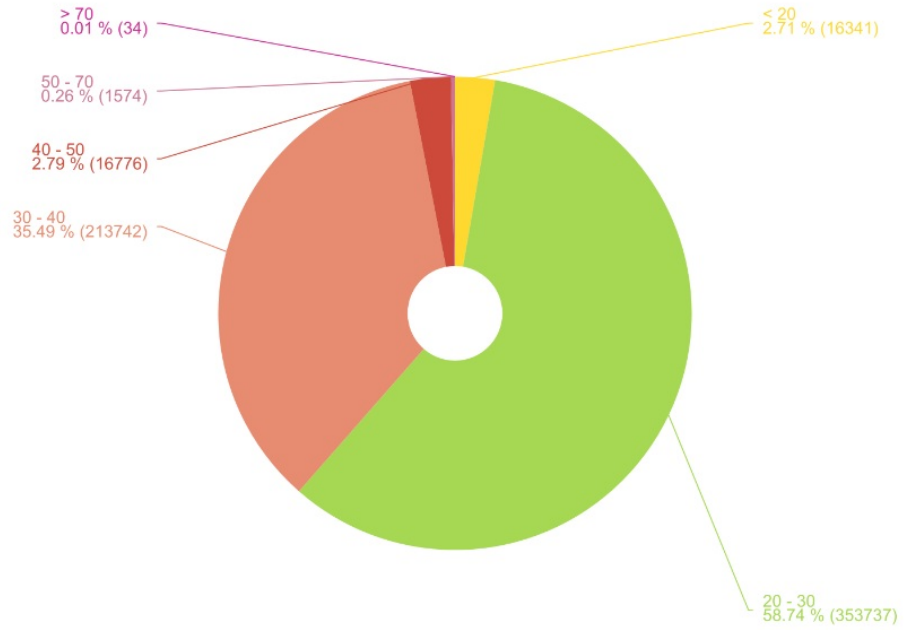
Percentiles :

V30 :
Inbound : 25 MPH
Outbound : 27 MPH

V50 :
Inbound : 26 MPH
Outbound : 29 MPH

V85 :
Inbound : 31 MPH
Outbound : 34 MPH

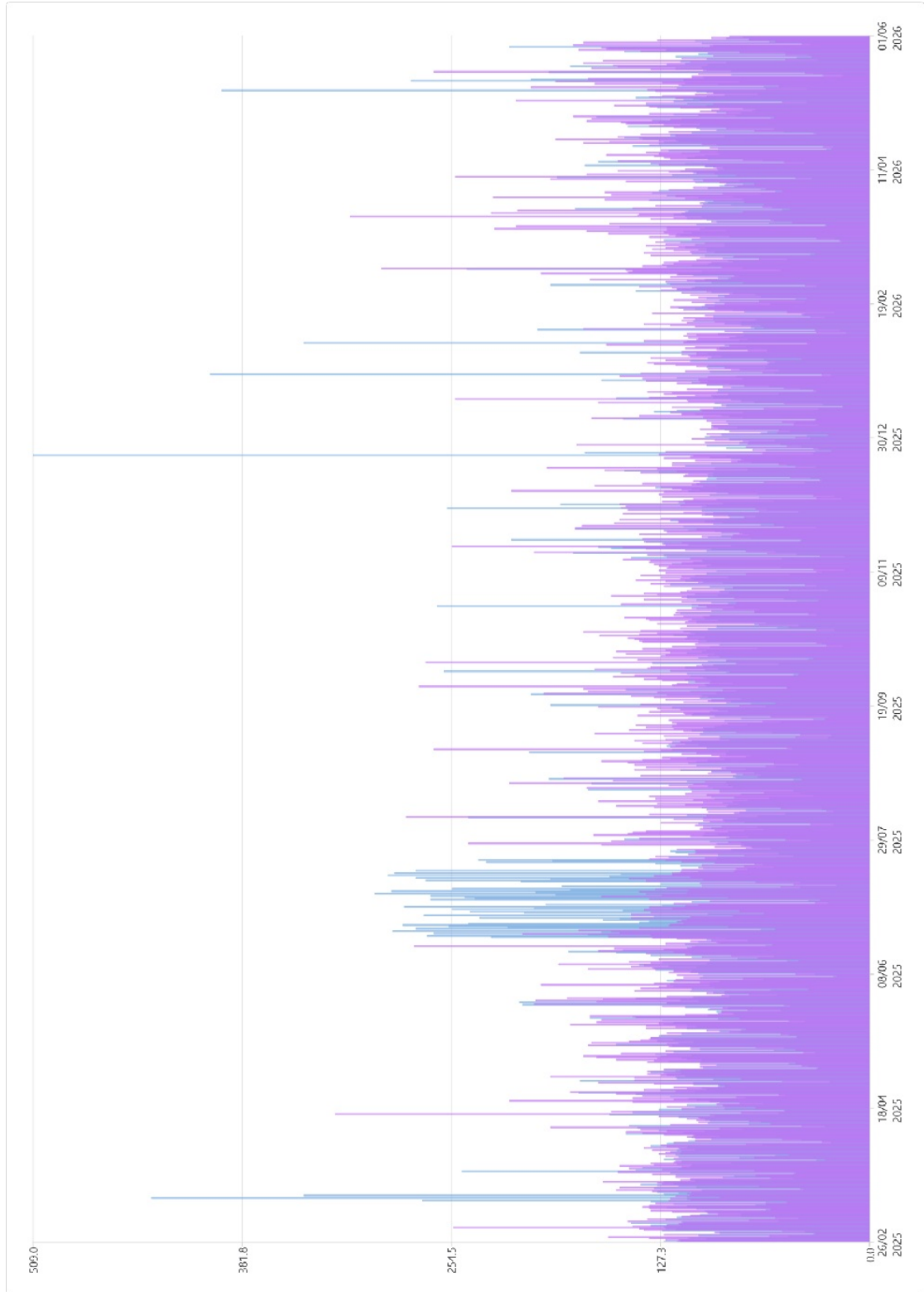






Name ELANCITY RADAR
Zone 30 MPH
Period From Wednesday 26 February 2025 14:30
To Monday 1 June 2026 13:27

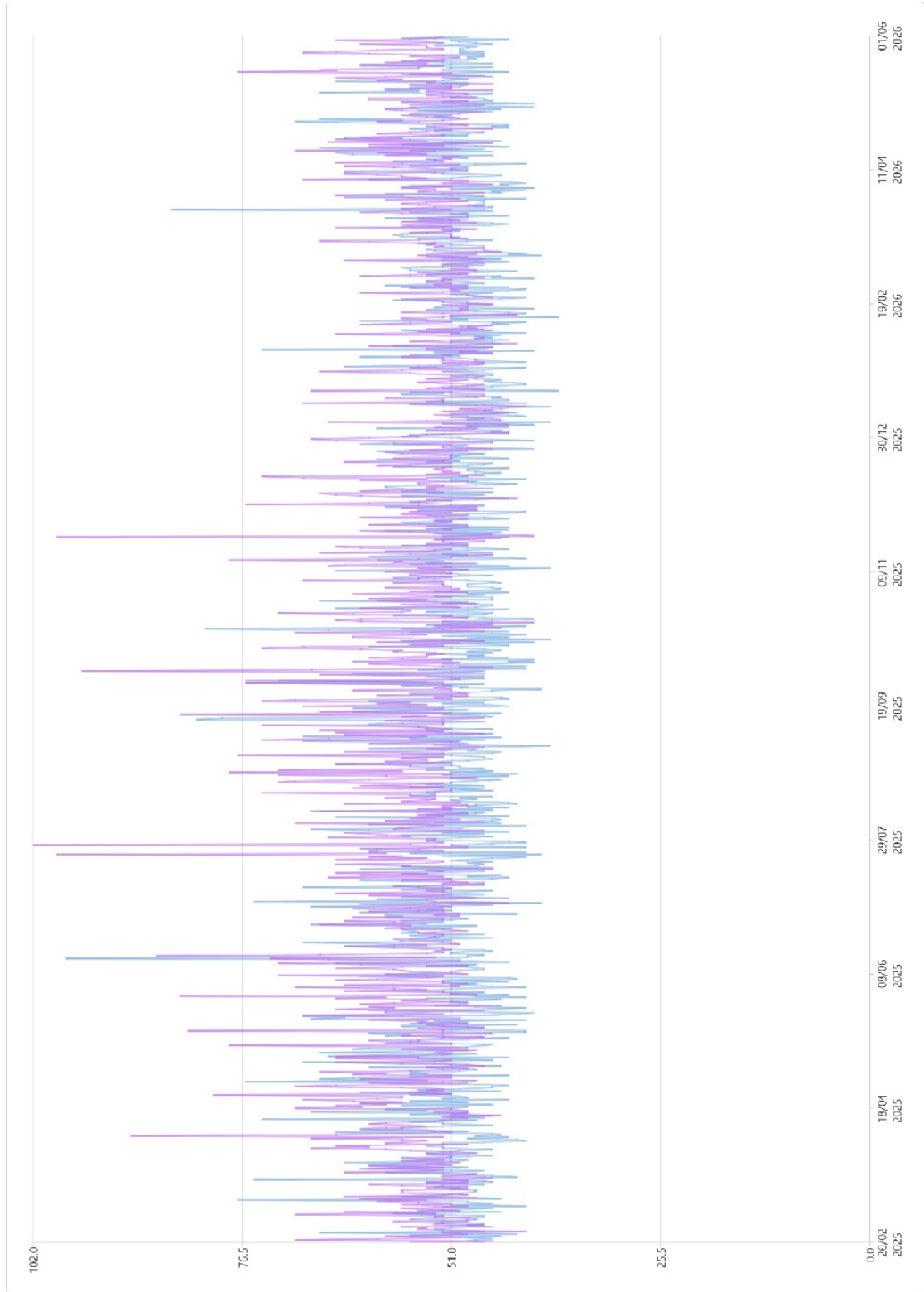
Vehicles per hour



Vehicles per hour

Total inbound vehicles : 538243

Total outbound vehicles : 601067



Maximum speeds

Inbound maximum speed : 98

Outbound maximum speed : 102